

PRODUCT
CATALOG

NITECORE®
KEEP INNOVATING

NITECORE®

SYSMAX CORP.

www.nitecore.com

SYSMAX Innovations Co., Ltd.

24/F, TCL Plaza, No. 18 Haizhou Road, Haizhu District, Guangzhou,

510335, Guangdong, China

Tel: +86 20 83862000 Fax: +86 20 83882723

E-mail: info@nitecore.com



CONTENTS

2 About NITECORE

- 4 Awards
- 6 Brand Image
- 8 Global Users
- 10 Knowledge
- 15 Patents
- 16 Quality Assurance
- 18 Scenarios

20 Headlamp

- 22 NU Series
- 31 UT Series
- 35 Headlamp Series

40 Flashlight

- 42 EDC Series
- 48 Tiny Monster Series
- 50 Precise Series
- 54 Explorer Series
- 56 Multitask Hybrid Series
- 59 Smart Ring Tactical Series
- 59 Chameleon Series
- 60 Multi-Task Series
- 63 NPL Series
- 66 T Series
- 70 Lantern Series
- 72 NWL Series

- 74 CL Series
- 75 GEM Series
- 75 DL Series

76 Power Solution

- 78 Power Bank
- 82 Battery
- 84 Charger

88 Mosquito Protection

- 88 EMR Series

92 Fan

- 92 NEF Series
- 94 izzCool® Series
- 96 CW Series

98 Explore More

- 98 Air Pump
- 98 Gadget
- 100 Lighting Accessories
- 102 Photography Accessories
- 112 Carry Gear

116 Specifications



www.nitecore.com

KEEP INNOVATING

NITECORE®



NB10000



2026

Discover the Next Chapter

ABOUT NITECORE

Inspired by the notion to "Keep Innovating" with the industry-leading innovative power for 19 years, NITECORE is the first brand to achieve a grand slam milestone in the industries of professional lighting and chargers to receive the German iF Design Award, Red Dot Design Award, the Japanese G-Mark (Good Design) and the American IDEA, as well as Gold Winners of the ISPO Award and Outstanding Outdoor globally recognized in the outdoor industry. We specialize in product lines varying from professional lighting to outdoor electronics, camera cleaning solutions, and carry gear specially designed for law enforcement and military departments, industrial corporations and outdoor enthusiasts worldwide.

Establishment

2007

Countries and Regions

130+

Global Patents and Certifications

5000+

Clients and Users

10M+

PRODUCT AWARDS

Established in 2007, NITECORE has long been at the forefront of technological advancement in portable illumination. Through its tremendous research and development capacity, NITECORE has become the first brand in the professional lighting and illumination industry to receive all four grand international design prizes including the American IDEA, the German iF Design Award, Red Dot Design Award and the Japanese G-Mark (Good Design), in addition to the worldly famous ISPO Award in the outdoor industry. NITECORE products are internationally recognized in over 130 countries.



EDC29

Ultra Slim High Performance
EDC Flashlight



reddot winner 2025



CineWind® CW20

Multipurpose Pocket
Photography Fan



GOOD DESIGN
AWARD 2024

reddot winner 2025



EMR10

Portable Electronic
Multipurpose Repeller



CineWind® CW30

Portable Cord-Free
Photography Fan



reddot winner 2024



TM20K

Ultra High Performance
Tactical Searchlight



reddot winner 2022



SUMMIT 10000

Low Temperature
Resistant Carbon Fiber
Power Bank



GOOD DESIGN
AWARD 2023



TIN12

Dual-Core Intelligent
Keychain Light



kapok



Camera Sensor Cleaning Solution



reddot winner 2022



NPS600

Portable Outdoor Power
Station



kapok



DESIGN
AWARD
2021



BlowerBaby™ Electronic Air Blower Solution



DESIGN
AWARD
2022



reddot winner 2022



TIKI / TIKI LE

Mini Futuristic
Keychain Lights



kapok



DESIGN
AWARD
2021



SCL10

2-in-1 Smart Camera
Light & Power Bank



TIPA World Awards 2021
Best Power Accessory



21700 Intelligent Battery System



HU60 & NPB1

E-focus Elite Headlamp Set



ISPO
Award
2021
Winner

MEDIA RECOGNITION

GEARJUNKIE

EDC29

Top Flashlights of
SHOT Show 2025



HICONSUMPTION

CARBO 10000 Gen2

The 10 Best New EDC Essentials



GEARJUNKIE

EDC27

The Best Flashlights of
2025



1LUMEN
FLASHLIGHTS

UT27

The Best Headlamp
of 2025



CLEVERHIKER

NU27

Best Headlamps
of 2025



GEARJUNKIE

NU20 Classic

Top Headlamps of
SHOT Show 2025



CLEVERHIKER

NU25 UL

Best Headlamps
of 2025



GEARJUNKIE

EDC33

The Best Flashlights of
2024



GEARJUNKIE

P20iX

The Best Flashlights of 2022
(Most Versatile Flashlight)



EVERYDAY
CARRY

EDC27

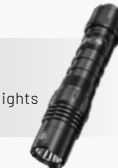
Best Tactical Flashlights
for 2024



EVERYDAY
CARRY

P10i

The 10 Best Tactical Flashlights
in 2021



EVERYDAY
CARRY

TIN12 Ti

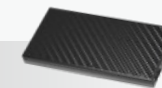
2023 Best Keychain Flashlight



Backpacker

NB10000

The Best Ultralight Powerbank of 2021
The Best Backpacking Electronics of 2021



Carryology

NTP31

Best Tactical Pens to EDC
in 2021



GLOBAL PRESENCE

NITECORE has played an essential role in various organizations around the globe and has made great contributions to the outdoor, tactical and photography industry. By now we are the active members of the following organizations:



The Portable Lights American Trade Organization (PLATO)



National Shooting Sports Foundation (NSSF)



High and New Technology Enterprise (HNTE)



China Sporting Goods Federation (CSGF)

NITECORE ATHLETES

Jiasheng Shen

2023 2nd UTMB CCC
2023 4th Western States
100-Mile Endurance Run
2025 1st Mt.FUJI 100



Joaquin Lopez

2024 3rd UTMB
2025 1st Mt.FUJI 100



Germain Grangier

2023 3rd UTMB
2025 3rd Hardrock 100



Katie Schide

2024 1st UTMB
2024 1st Western States
100-Mile Endurance Run
2025 1st Hardrock 100
2025 1st WMTRC



Ha Thi Hau

2023/2024 4th UTMB CCC
2025 1st TSAIGU TRAIL
2025 6th Western States
100-Mile Endurance Run



RongRong Chen

2023 2nd ULTRA-TRAIL
Mt.FUJI
2025 1st Chengdu Trail



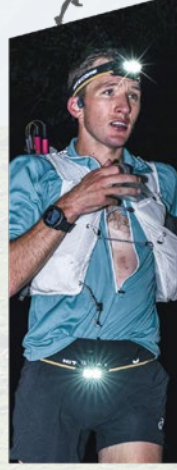
Fuzhao Xiang

2023 4th UTMB
2024/2025 2nd Western States
100-Mile Endurance Run
2025 1st Mt.FUJI 100



Josh Wade

2025 3rd UTMB
2025 3rd Transgrancanaria



Tom Evans

2023 1st Western States
100-Mile Endurance Run
2025 1st UTMB



Sunmaya Budha

2025 2nd WMTRC
2025 1st HK100



Scotty Hawker

2021 2nd UTMB CCC

SPONSORED EVENTS



Transgrancanaria



Low-Light Hard Task Training



Ultra-Trail Village



TPSB 2025 (Trail du Petit Saint Bernard)



Official Exclusive Lighting and Power Bank Sponsor of Hardrock 100



Official Exclusive Lighting and Power Bank Sponsor of Rinjani 100



Olympus Marathon



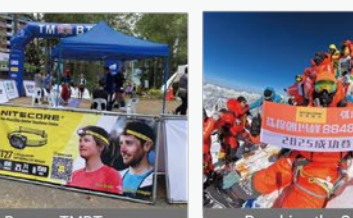
Mt.FUJI 100



Chiangmai Thailand by UTMB



Sole Lighting Sponsor of HK100 Ultra Trail



Borneo TMBT Ultra Trail Marathon



Reaching the Summit of Mount Everest by Zhang Jing



Vietnam Mountain Marathon



TSAIGU TRAIL AGENDA



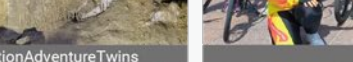
Rescue Training



CHALAM NOI IDPA CHALLENGE



POMERANIA TRAIL



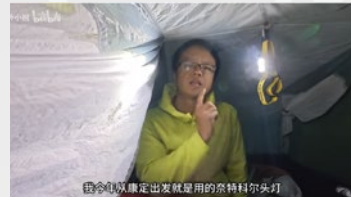
ActionAdventureTwins



Guangzhou Dream Cycling Team



@ 测评界的野路子



@ 户外小祝



@NickShabazz



@ 萤火部落



@Mirco Tere & Bella



@Frugal Outdoors & Camping



@Run4Adventure



@Backcountry Kiwi



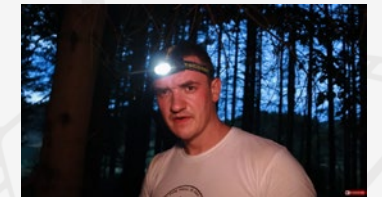
@Mat min



@Miguel Quiles



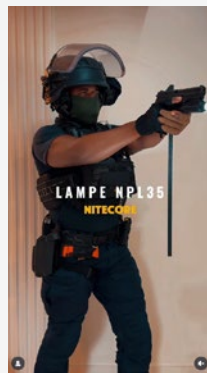
@Out With A Finn



@survivalland

★★★★★ GLOBAL USERS

NITECORE has gained global popularity and is beloved by users around the world. Our products are regularly featured on major social media platforms and highly recommended by users from various regions.



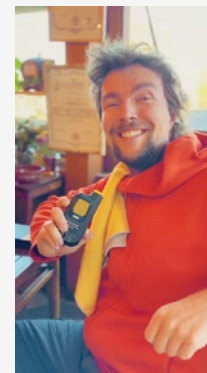
@french.tactical_5.0



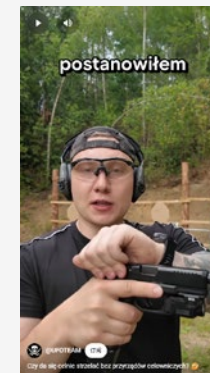
@dbossfirearms6384



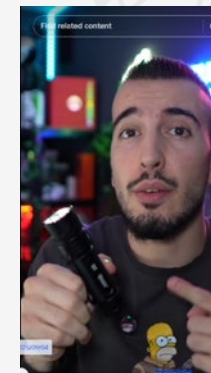
@tactical_advisor



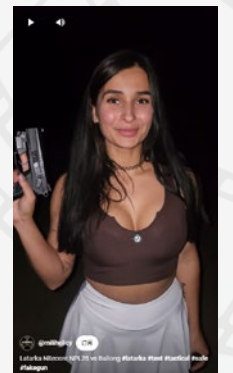
@Daniel Kordan



@UFO TEAM



@mental_crisis26



@MILholic



@Charles BridgTec



@LumenLaboratory



@Nakashi Army



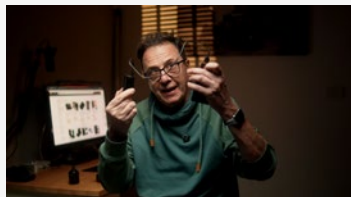
@Jiggie Alejandrino



@Josh Fenn



@Kumander Daot



@Andrea Carretta



@Jon Gadget



@Outer Limitless Lights



@Moorlander EDC



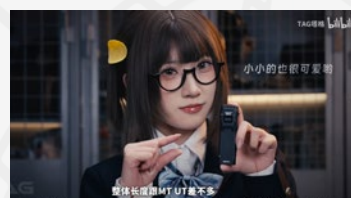
@Proyecto Sandia



@Marusya Outdoors



@Huy BT 5.0



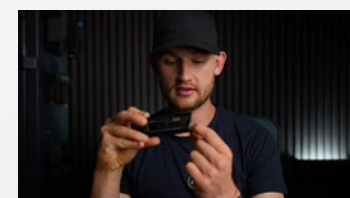
@TAG 塔格防务



@IDPA CHINA



@ 盖隐技术 GainTachnic



@Honzashooter



@miliholic

NiteLab®

Industry's First Professional Portable Lighting LED Brand

Both NiteLab and NITECORE belong to SYSMAX which is dedicated to exploring LED technology to reinvent the portable lighting LED solutions.



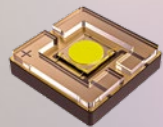
UHE LED

Ultra High Efficiency

UHE, short for Ultra High Efficiency, represents NiteLab's pioneering development in LEDs and is specifically designed for high performance gear such as headlamps. It delivers enhanced efficiency per watt, offering a brighter, more energy-efficient, and long-lasting lighting experience.

Max Luminous Efficiency Comparison

UHE LED	21% ↑	190 lm/W
SST 40 LED		157 lm/W



UHi LED

Ultra High Intensity

New Generation Tailor-Made Portable Lighting LED

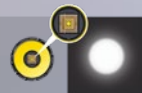
LED New Benchmark

NiteLab cooperated with an industrial partner to jointly develop the UHi LED Series, specially designed for portable lighting. Featuring high light density and ultra high beam intensity, the UHi LED utilizes the round light emitting surface (LES) to achieve an optimal lighting effect and beam distance, which challenges the impossible and begins a new era.

UHi 10 UHi 20/MAX UHi 25 UHi 40/MAX UHi 50 UHi 100

From Square to Round

UHi LED + Round Reflector



Conventional Square LED + Round Reflector

Ultra Mini Design Ultra High Light Density

Light Density Comparison

(Max brightness per square millimeter of the light emitting surface)

UHi 20

876 Lumens/mm²



VS



Same Power LED

611 Lumens/mm²



M515S LED

Multi-core X-shaped Array

Self-developed by NiteLab, the M515S LED, a next-generation professional mobile lighting solution, features a groundbreaking X-shaped array packaging architecture, integrating a high luminous density core with four high efficiency cores in a diagonally symmetric design.

NITECORE Model: EX7



Central

High Luminous Density & Long Throw Core
Ultra High Beam Intensity & Ultra Long Throw



Peripheral

High Efficiency Flood Core
Beam Pattern Switch & Powerful Light Output

Variable Beam Pattern

Spotlight

Search
Rescue



Floodlight

Pathway Lighting
Area Lighting



Mixed Light

General Use

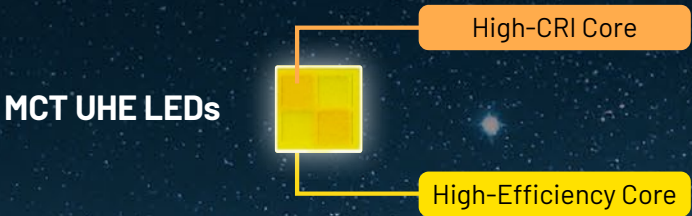




MCT LIGHTING SYSTEM

(Variable CRI Multiple Color Temperatures)

The MCT (Variable CRI Multiple Color Temperatures) Lighting System combines NiteLab's self-developed MCT UHE LEDs with NITECORE's multi-faceted optical lens system, effectively integrating light sources of different color temperatures and CRI levels into a single, fully blended beam, delivering high CRI, multiple color temperatures, high efficiency, soft lighting, and long-range performance.



High-CRI LED
CRI ≥ 90



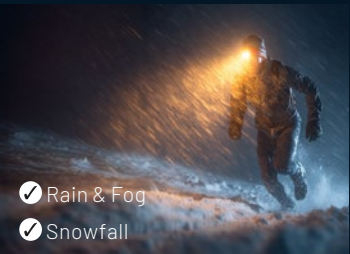
Conventional LED
CRI 70

Three Color Temperatures & Three CRI Options

CRI ≥ 97

3000K Warm Light

Effectively gathers visual details in high-risk outdoor environments

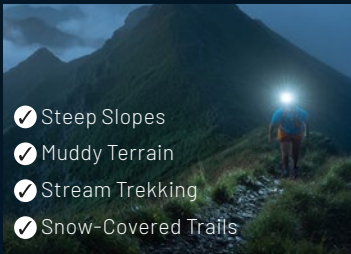


- ✓ Rain & Fog
- ✓ Snowfall

CRI ≥ 83

4500K Neutral White Light

Better judgment on technical terrain in medium-risk outdoor environments

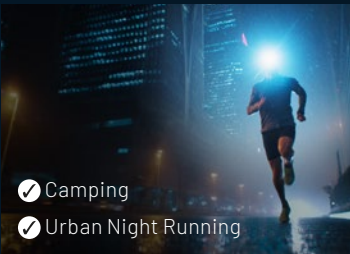


- ✓ Steep Slopes
- ✓ Muddy Terrain
- ✓ Stream Trekking
- ✓ Snow-Covered Trails

CRI ≥ 73

6500K Cool White Light

Optimal brightness and efficiency for low-risk outdoor environments



- ✓ Camping
- ✓ Urban Night Running

See Clearly, Stay Safe

	Conventional Headlamp	Variable CRI Multiple Color Temperatures Headlamp
Rain / Fog / Snowfall (Low-Visibility Environments)	Limited Visibility Blurry Details ❌	High Visibility True-to-Life Details ✅
Steep Slopes / Dense Forests (Moderate Technical Terrain)	Terrain Misjudgment ❌	Enhanced Terrain Awareness Clear Path Visibility ✅
Snow / Glare Ice (Highly Reflective Path Surfaces)	Visual Discomfort ❌	Gentle, Comfortable, and Glare-Free ✅

NITECORE Models:



UT27



HA27 UHE



UT2000

Ultraviolet

The UV light has shorter wavelengths than visible light, and is also known as black light. Ultraviolet LED flashlights are useful in many applications, including identifying forged documents, tracing marked bills, leakage/grease inspection, sanitary check, hunting scorpions etc.

NITECORE Models: TIKI, TIKI UV, THUMB LEO, EDC17

Rapid Lock™ Lockout Switch

Full Lock / Half Lock / Unlock
With One Slide

NITECORE Models: EDC23,
EDC29, EDC31, EDC35, EDC37



LUMIN SHIELD®

LUMIN SHIELD®, specially designed by NITECORE, enables an instant defense with a blazing output thanks to a multi-core UHi MAX LED. This technology is engineered to provide an unprecedented wide-area protective coverage, resembling a shield.

NITECORE Models:
EDC29, EDC31,
EDC35, EDC37, EX7



STROBE READY™

In law enforcement, the strobe flashlight for self-defense is used on potential suspects who may present a danger but are not lethally armed. The strobe light is disorienting to the person it is aimed at, which makes it difficult for them to concentrate. Also, they avert their eyes away from the strobing effect. This means it is easier for the police to subdue successfully and control the suspect.

The 2nd Generation STROBE READY™ Technology is specially designed by NITECORE for tactical applications to enable a quick access to STROBE Mode with the dual tail switches and the inset pedal design to avoid accidental activation.



STROBE READY!™
ULTIMATE ONE-HANDED OPERATION

2nd Generation STROBE READY™ Technology

Infrared

The IR light is with wavelengths longer than those of visible light. Extensive uses for military and civilian applications include target acquisition, surveillance, night vision, homing, and tracking.

NITECORE Models: CI7, NU06 MI

Advanced Randomly Changing STROBE Mode

The randomly changing frequencies available in the STROBE Mode of the latest NITECORE models can cause stronger dizzying effects due to the inadaptability of the naked eyes.

NITECORE Models: P10i, P20i UV, P10iX, P20iX, CI7

TurboReady™

NITECORE aims to lead a trend of new tactics with the TurboReady™ technology to enable an instant dazzle strike with a blazing tactical output, in order to produce an abrupt disturbance to your adversary during the day or at night.

NITECORE Models:
TM20K, TM12K

TURBO/READY™
Tactical Buttons

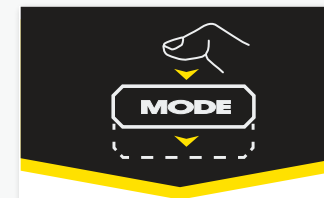


NITECORE Models: P10i, P20i UV, P10iX, P20iX, CI7

- 1 Specially designed for tactical applications to enable a quick access to STROBE Mode (Patent No. ZL201320545349.4)
- 2 Inset pedal design to avoid accidental activation (US Patent No. 15/846299 US10237955B1)

PATENTS

With advanced technologies and technical personnel, NITECORE has been keeping innovating over the years and has harvested over one hundred invention patents and utility model patents.



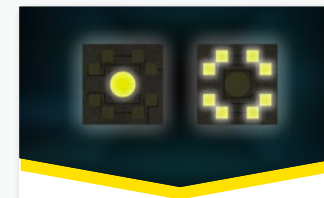
Dual-Stage Tactical Button



2nd Generation
STROBE READY™ Technology



Rapid Lock™
Lockout Switch



Multi-Core UHi LED



MCT UHE LEDs
(Multiple Color Temperatures)



MCT Lighting System
(Variable CRI Multiple Color Temperatures)



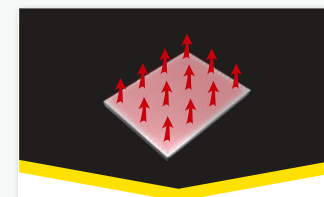
Split Type Headlamp
With a Built-in Energy Storage
Component



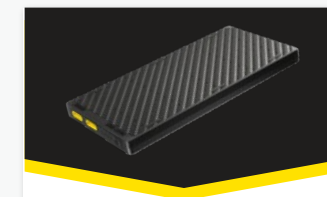
Ultra Compact Carbon Fiber
Power Bank



Quick-Release Fastener Design



Efficient FCB Heating System



Carbon Fiber Composite
Anti-Torsion Structure



EDC Flashlight
With Anti-Slip Design



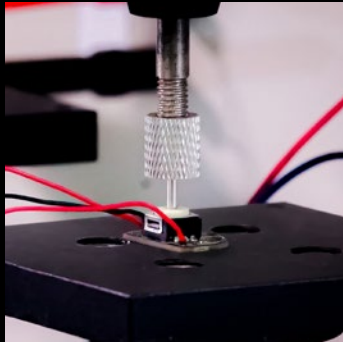
QUALITY ASSURANCE

NITECORE products combine advanced technology with precise design, undergo rigorous testing, and meet industry standards to deliver exceptional performance.



Luminous Flux Testing

NITECORE uses integrating spheres to accurately evaluate data such as luminous flux and color temperature.



Button Life Testing

NITECORE uses a button life testing machine to determine the buttons' durability and the compressive strength of the internal structure.



High and Low Temperature Testing

NITECORE uses a constant temperature and humidity test chamber to test the product performance in extreme temperature and humidity.



Aging Testing

NITECORE adjusts the product to its highest output and test its reliability by simulating long-term use conditions to ensure quality before shipment.



Battery Safety Testing

Rigorous tests are carried out on the battery, as well as to check the performance and lifespan of the battery in extreme environments.

WHEN THERE IS DARKNESS THERE IS A NITECORE LIGHT

SPORT

NITECORE is dedicated to equipping outdoor enthusiasts with high performance gear for every adventure - from trail running and hiking to mountaineering and camping. Our lightweight, multifunctional designs turn every detail of innovation into comfort and safety, enabling users to enjoy every moment outdoors to the fullest.



Trail Running

Recommended Models: UT27, UT2000, NU25 MCT, NU25 MCT UL, HA23 UHE, HC60 UHE, HC65 UHE



Mountaineering

Recommended Models: HC60 UHE, HC65 UHE, UT27, HC33, HA23 UHE



Ultralight

Recommended Models: NU20 Classic, NU25 MCT, NU25 MCT UL, NU21, NU27, MT1A Pro, MT2A Pro



Everyday Carry

Recommended Models: T4K, TIP3, TIKI, TINI3, E4K, MH12 Pro, MH25 Pro, MT1A Pro, MT2A Pro



Hiking

Recommended Models: NU27, NU25 MCT, NU33, NU40, NU43, NU50, HA13



Camping

Recommended Models: NU27, NU25 MCT, LR40, LR70, NU33, NU31, NU40, NU43



Caving

Recommended Models: HC60 UHE, HC65 UHE, NU33, NU40, NU43



Cycling

Recommended Models: BM06 + HC60 UHE/HC65 UHE



Fishing

Recommended Models: HA11, NU25 MCT, NU11



Diving

Recommended Model: DL30



TACTICAL

NITECORE's tactical gear is built to military-grade standards, ensuring stability, reliability, and rapid response even in extreme conditions. By integrating multiple innovative technologies, such as LUMIN SHIELD® and STROBE READY™, our products deliver mission-critical support for professional operations.



Military & Law Enforcement

Recommended Models: P20iX, P20UV V2, CI7, P23i, NPL25, NPL25 GL, CL10, HC65M UHE



Security

Recommended Models: P23i, P20iX, P20UV V2, NU06 LE, NU07 LE, SRT6i



Hunting

Recommended Models: P30i, NEW P30, MH12 Pro, MH25 Pro, MH40 Pro



Search & Rescue

Recommended Models: P30i, MH40 Pro, HC70 UHE, HC75 UHE



Tactical EDC

Recommended Models: EDC23, EDC25, EDC27 UHI, EDC29, EDC31, EDC35, EDC37



WORK

NITECORE is committed to delivering reliable and efficient professional solutions. Every product is rigorously tested and precision-engineered for performance and durability, from lighting and mosquito repelling devices to power solutions, all designed for industrial applications.



Maintenance

Recommended Models: EDC09, EDC17, EX7, NU50, HC65 UHE, HC75 UHE, HU2000, NWL30



Field Work

Recommended Models: EDC09, EDC17, EX7, HC65 UHE, HC75 UHE, HU2000, NWL30





HEADLAMP

NITECORE HEADLAMP GUIDE



	ENTRY LEVEL	PREMIUM	SUPERIOR
 Running	NU25 MCT Ultra Lightweight Multiple Color Temperatures Outdoor Headlamp 	UT27 High CRI Three Color Temperatures Lightweight Trail Running Headlamp 	UT2000 High CRI Three Color Temperatures Split-Type Trail Running Headlamp 
 Trekking	HA23 UHE Multiple Color Temperatures Lightweight AAA Headlamp 	HA27 UHE High CRI Multiple Color Temperatures Modular Headlamp 	HC65 UHE Ultra High Triple Output Metal Headlamp 
 Hiking	HA23 UHE Multiple Color Temperatures Lightweight AAA Headlamp 	HA27 UHE High CRI Multiple Color Temperatures Modular Headlamp 	HC65 UHE Ultra High Triple Output Metal Headlamp 
 Camping	HA23 UHE Multiple Color Temperatures Lightweight AAA Headlamp 	HA27 UHE High CRI Multiple Color Temperatures Modular Headlamp 	HC60 UHE High Performance Rechargeable Outdoor Headlamp 
 Industrial Maintenance	NU53 High Output Lightweight Industrial Headlamp 	HU2000 High Output Split-Type Work Headlamp 	HC75 UHE E-focus Work Headlamp 
 Fishing	NU11 Intelligent IR Sensor Clip-on Cap Light 	NU21 Ultra Lightweight Dual Beam Outdoor Headlamp 	NU30 Triple Output Lightweight Outdoor Headlamp 
 Caving	HU2000 High Output Split-Type Work Headlamp 	HC60 UHE High Performance Rechargeable Outdoor Headlamp 	HC75 UHE E-focus Work Headlamp 

N

NU Series

NITECORE NU Series headlamps are lightweight and powered by built-in Li-ion batteries. They feature a uniform wide beam, powerful output for versatile outdoor adventures. The MCT (Multiple Color Temperatures) UHE LEDs allow users to switch between cool white, neutral white, and warm light to adapt to different environments. Crafted from durable PC materials, the NU Series is purpose-designed for trail running, trekking, hiking, camping, and more.

HOT SALE

NU25 MCT

Ultra Lightweight Multiple Color Temperatures Outdoor Headlamp

- 400 Lumens
- 132 Meters
- 45 Hours
- 50g (1.76 oz)
- Built-in 700mAh Li-ion Battery
- USB-C Rechargeable



Features



Self-developed Lighting System With Multiple Color Temperatures in All Primary Lights



The Lightest Generation Ever

↓ 10.7%

Dual Primary Lights Both with Three Color Temperatures



3000K Warm Light

Excellent penetrating ability in fog and rain while avoiding glare and reflection in snow



4500K Neutral White Light

Suitable for various outdoor activities



6500K Cool White Light

Striking and refreshing during long hikes or runs

HOT SALE

NU25 MCT UL



Ultra Lightweight Multiple Color Temperatures Outdoor Headlamp

- 400 Lumens
- 132 Meters
- 45 Hours
- 47g (1.66 oz)
- Built-in 700mAh Li-ion Battery
- USB-C Rechargeable



Headlamp

Flashlight

Power Solution

Mosquito Protection

Fan

Explore More

NU27



Ultra Lightweight Multiple Color Temperatures Outdoor Headlamp

NiteLab MCT UHE LEDs

600 Lumens

123 Meters

57 Hours

56g (1.98 oz)

Built-in 850mAh Li-ion Battery

USB-C Rechargeable



2 Colors Available



Features

Industry's First MCT Outdoor Headlamp



Neutral White (4,500K)

For various activities



Warm Light (3,000K)

Excellent penetrating ability in fog and rain while avoiding glare and reflection in snow



Cool White (6,500K)

Helps you be wakeful and attentive



3 Colors Available



NU21



NU20 Classic

	Ultra Lightweight Dual Beam Outdoor Headlamp	Ultra Lightweight Outdoor Headlamp
	360 Lumens	360 Lumens
	58 Meters	109 Meters
	Built-in 500mAh Li-ion Battery	Built-in 500mAh Li-ion Battery
	USB-C Rechargeable	USB-C Rechargeable
	44g (1.55 oz)	38g (1.34 oz)

NU33

Triple Output USB-C Rechargeable Headlamp

700 Lumens

135 Meters

147 Hours

95.5g (3.37 oz)

Built-in 2,000mAh Li-ion Battery

USB-C Rechargeable



Features



Flood Beam Range >100°



Durable and rugged aluminum metal front housing provides high efficiency heat dissipation.



1.5 Hours to Fully Charge



Skin-friendly Headband Included



Triple Light Sources



NU30



3 Colors Available



NU31

	Triple Output Lightweight Outdoor Headlamp	Triple Output Lightweight USB-C Rechargeable Headlamp
	500 Lumens	550 Lumens
	130 Meters	145 Meters
	Built-in 1,500mAh Li-ion Battery	Built-in 1,800mAh Li-ion Battery
	USB-C Rechargeable	USB-C Rechargeable
	90g (3.17 oz)	95.5g (3.37 oz)

NU43

High Output Lightweight 18650 Rechargeable Headlamp

- 1,400 Lumens
- 130 Meters
- 116g (4.09 oz)
- 3,400mAh (Built-in 18650 Li-ion Battery)
- USB-C Rechargeable

Features

- HIGH (600 Lumens) 10 Hours
- MID (300 Lumens) 15 Hours
- LOW (100 Lumens) 29 Hours

Ultra Smooth TrueVision+ Technology

Near-Center of Gravity Bracket

Skin Friendly Widened Headband

Sensor Protection Function

IP68 Rated

Lockout Mode



	NU40	NU45
	High Performance Lightweight USB-C Rechargeable Headlamp	High Output Lightweight 18650 Rechargeable Headlamp
	1,000 Lumens	1,700 Lumens
	100 Meters	172 Meters
	2,600mAh (Built-in 18650 Li-ion Battery)	4,000mAh (Built-in 18650 Li-ion Battery)
	USB-C Rechargeable	USB-C Rechargeable
	116g (4.09 oz)	126g (4.44 oz)
	IP68	IP68



	NU50	NU53
	Superior Performance 21700 USB-C Rechargeable Headlamp	High Output Lightweight Industrial Headlamp
	1,400 Lumens	1,800 Lumens
	130 Meters	175 Meters
	5,000mAh (Built-in 21700 Li-ion Battery)	6,000mAh (Built-in 21700 Li-ion Battery)
	USB-C Rechargeable	USB-C Rechargeable
	146g (5.15 oz)	151g (5.33 oz)
	IP68	IP68

NU11

Intelligent IR Sensor Clip-on Cap Light

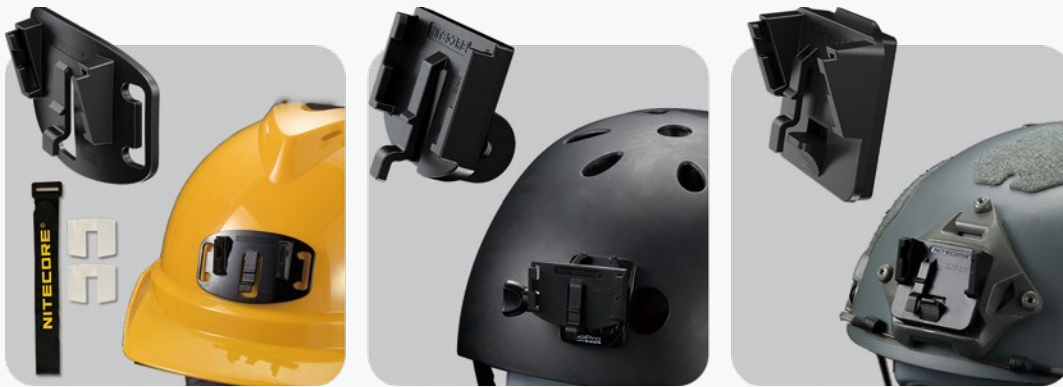
- 150 Lumens
- 50 Meters
- 6 Hours
- 41g (1.45 oz)
- Built-in 600mAh Li-ion Battery
- Motion Sensor
- USB-C Rechargeable



Helmet Accessories

Specially designed for attaching NU Series headlamps to the helmets

Helmet Mount Base



HMB1
Universal Helmet Mount Base

HMB1S
Sport Helmet Mount Base

HMB1 TAC
Tactical Helmet Mount Base

Headlamp Bracket



HLB20
Compatible with NITECORE NU21, NU25, NU25 UL and more

HLB30
Compatible with NITECORE NU31, NU33 and more

HLB40
Compatible with NITECORE NU40, NU43 and more

HLB50
Compatible with NITECORE NU50 and more



Ideal Choices for Longer Headlamp Runtime

Carbon Battery™ 6K Kit

Extended Headlamp Runtime Kit

- 6,000mAh 3.6V (21.6Wh)
- 134g (4.73 oz) Total Weight
- IP68



NEW Carbon Battery™ 12K Kit

Extended Headlamp Runtime Kit

- + Runtime up to
- Paired with NU45 2.5x longer
- Paired with NU53 2x longer
- Paired with HC65 UHE 2x longer



Red Safety Rear Light

- 12,000mAh 3.6V (43.2Wh)
- 30W Max Output
- IP68

18650 Extension Battery Case

Always Ready to Use

Battery Option:
18650 Li-ion battery (Flat Top Battery Excluded)



* Battery Not Included

All of them are compatible with the HC65 UHE, HC60 UHE, HC75 UHE, HC70 UHE, NU53, NU50, NU43, NU40, and more.

Signal Light



NU05 V2

Ultra Lightweight USB-C Rechargeable Headlamp Mate

	4 × High Performance LEDs
	40 Lumens
	47 Hours
	USB-C Rechargeable
	11.1g (0.39 oz)
Light Sources	
Modes	5 Modes (Red Indicator Slow Flashing + 2 Colors Slow Flashing + Red Light Quick Flashing + White Light Constant-on)



NU06 LE

Mini Signal Light Law Enforcement Version

	4 × High Performance LEDs
	15 Lumens
	75 Hours
	USB-C Rechargeable
	15.8g (0.56 oz)
Light Sources	
Modes	9 Modes (4 Colors Constant-On + 4 Colors Flashing + Red/Blue Police Warning Flashing)



NU06 MI

IR Mini Signal Light Military Version

	4 x High Performance LEDs
	8Lumens
	75 Hours
	USB-C Rechargeable
	16.7g (0.59 oz)
Light Sources	
Modes	9 Modes (3 Colors Constant-On/Flashing + Red/Blue Police Warning Flashing + IR Constant-On/Flashing)



NU07 LE

Rechargeable Signal Light Law Enforcement Version

	5 x High Performance LEDs
	15 Lumens
	50 Hours
	USB-C Rechargeable
	24.5g (0.86 oz)
Light Sources	
Modes	11 Modes (5 Colors Constant-On + 5 Colors Flashing + Red/Blue Police Warning Flashing)

UT Series

The UT Series is specially designed and optimized for trail runners in nighttime or in rain, snow or fog. Compared to marathons, trail races usually feature a longer distance, a steeper gradient and a longer duration with higher requirements on personal equipment, among which is the mandatory lighting gear.

NITECORE Ambassador
Katie Schide
2024 1st UTMB
2025 1st Hardrock 100



UT27

High CRI Three Color Temperatures
Lightweight Trail Running Headlamp

- NiteLab MCT UHE LEDs
- 800 Lumens
- 168 Meters
- 14 Hours 30 Minutes
- 74g (2.61 oz)
- HLB1500 Li-ion Battery Pack
- 3 x AAA



2 Colors Available



Features

Debut
Variable CRI
Multiple Color Temperatures LED



MCT UHE LEDs

High-CRI Core

High-Efficiency Core

First in the Industry
Three Color Temperatures & Three CRI Options

CRI 97

3000K Warm Light

Ensuring clear visual perception
in high-risk environments



- ✓ Rain & Fog
- ✓ Snowfall

CRI 83

4500K Neutral White Light

Fearless in medium-risk technical
terrain

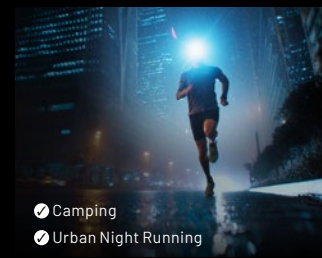


- ✓ Steep Slopes
- ✓ Muddy Terrain
- ✓ Stream Trekking
- ✓ Snow-Covered Trails

CRI 73

6500K Cool White Light

Ready for low-risk everyday environments
with superior brightness and efficiency, and
extended runtime



- ✓ Camping
- ✓ Urban Night Running

Dual Power Options

HLB1500
Rechargeable Li-ion Battery Pack
(1,500mAh) Included
High Capacity, Long Runtime,
Efficient Illumination



Compatible with
3 x AAA Alkaline Batteries
Low-Cost and Widely Available



Glow-in-the-dark Battery Compartment

(Invention Patent No. ZL202110998288.6)
(Utility Patent No. ZL202122056854.X)

Quick Installation at a Glance

The glow-in-the-dark design enables
quick identification of the battery
compartment in the dark, making battery
replacement faster and easier.



UT2000

High CRI Three Color Temperatures
Split-Type Trail Running Headlamp

- NiteLab MCT UHE LEDs
- 2,000 Lumens
- 220 Meters
- IP68
- USB-C Powered
- Carbon Battery™ 12K (12000mAh)



Features



Split Type Design

Carbon Battery™ 12K Included

USB-C Extension Cable
Compatible with
higher capacity power banks

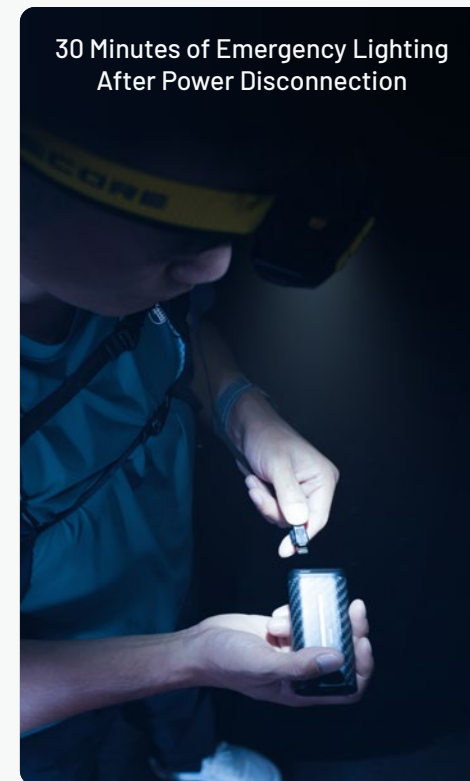


High-Performance Mode



Long-Runtime Mode

30 Minutes of Emergency Lighting
After Power Disconnection



Red Rear Light



ULTRA LIGHTWEIGHT

Trail Running Lighting & Power Solutions

>100KM



50-100KM



<50KM



H Headlamp Series

NITECORE Headlamp Series offers high performance and ultra lightweight headlamps, featuring a replaceable battery and powerful output. These headlamps enable users to tackle various challenges quickly and efficiently, ideal for military applications, search and rescue, industrial safety, outdoor sports, and more.

Headlamp

Flashlight

Power Solution

Mosquito Protection

Fan

Explore More

NEW HA27 UHE

High CRI Multiple Color Temperatures
Modular Headlamp

- NiteLab MCT UHE LEDs
- 800 Lumens 150 Meters
- 75g (2.65 oz) IPX6
- NITECORE HLB1500 Li-ion Battery Pack / 3 × AAA

Features



3000K Warm Light
CRI 97

4500K Neutral White Light
CRI 83

6500K Cool White Light
CRI 73

Detachable
Modular Power System



NITECORE HLB1500
Li-ion Battery Pack



3 × AAA

Magnesium Alloy Heat Sink



NEW HA25 UHE



Multiple Color Temperatures Outdoor Headlamp

- NiteLab MCT UHE LEDs
- 800 Lumens 120 Meters
- 65g (2.29 oz) IP66
- NITECORE HLB1500 Li-ion Battery Pack / 3 × AAA



HA23 UHE



Multiple Color Temperatures
Lightweight AAA Headlamp

- NiteLab MCT UHE LEDs
- 600 Lumens 132 Meters
- 56g (1.98 oz) IP68
- NITECORE HLB1500 Li-ion Battery Pack / 3 × AAA



3 Colors Available



Dual Battery Options



HLB1500 Li-ion Battery Pack



3 × AAA Batteries



HA11

Multipurpose Ultra
Lightweight AA Headlamp



HA13

Multipurpose Dual Beam
AAA Headlamp



HA15 UHE

Multipurpose Ultra
Lightweight AA Headlamp

	Multipurpose Ultra Lightweight AA Headlamp	Multipurpose Dual Beam AAA Headlamp	Multipurpose Ultra Lightweight AA Headlamp
	240 Lumens	350 Lumens	400 Lumens
	90 Meters	120 Meters	80 Meters
	1×AA / 1×14500	3 × AAA / 1 × HLB1300	1 × AA / 1 × 14500
(Battery Not Included)	38g (1.34 oz)	67g (2.36 oz)	43g (1.52 oz)

HU2000

High Output Split-Type Work Headlamp

- NiteLab UHE LED
- 2,000 Lumens 160 Meters
- USB-C Powered



With the NB10000:
17h Runtime



With the Carbon Battery™ 12K
Extended Headlamp Runtime Kit:
17h Runtime



USB-C Extension Cable
Compatible with most power banks
Split-Type Design
Ideal for keeping warm

HOT SALE

HC65 UHE

Ultra High Triple Output Metal Headlamp

NiteLab UHE LED

2,000 Lumens

222 Meters

82 Hours

152g (5.36 oz)

IP68 (Internal Waterproofing)

2m Impact Resistant

4,000mAh 18650 Li-ion Battery

USB-C Rechargeable

2 Colors Available



Features



Wide Compatibility



18650 Extension Battery Case



Carbon Battery™ 6K Extended Headlamp Runtime Kit

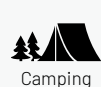


HLB40 Headlamp Bracket + HMB1/HMB1S/HMB1 TAC Helmet Mount Bases



BM06 Headlamp Bike Mount

Various Activities



Camping



Climbing



Trekking



Night Running



Road Trip



Emergency Lighting



NVG Mount

HC65M UHE

Ultra High Triple Output Metal Tactical Headlamp



HC60 UHE

High Performance Rechargeable Outdoor Headlamp

NiteLab UHE LED

USB-C Rechargeable

1,600 Lumens

157 Meters

200 Hours

140g (4.94 oz)

4,000mAh 18650 Li-ion Battery



HC70 UHE

High Performance 21700 Rechargeable Work Headlamp

	NiteLab UHE LED	NiteLab UHE LED
	1,600 Lumens	3,000 Lumens
	156 Meters	192 Meters
	6,000mAh 21700 Li-ion Battery	5,500mAh 21700 Li-ion Battery
	USB-C Rechargeable	USB-C Rechargeable
	172g (6.07 oz)	209g (7.37 oz)
	IP68	IP68



HC75 UHE

E-focus Work Headlamp



HC33

High Performance L-shaped Headlamp

	CREE XHP35 HD LED	4 × CREE XP-G3 S3 LEDs
	1,800 Lumens	2,700 Lumens
	187 Meters	134 Meters
	1 × 18650, 2 × CR123/RCR123	1 × 21700, 1 × 18650, 2 × CR123/RCR123
	330 Hours	1,200 Hours
	51.2g (1.80 oz)	138.5g (4.88 oz)

Magnetic



HC35

Next Generation 21700 L-shaped Headlamp

USB Rechargeable

Magnetic

Headlamp

Flashlight

Power Solution

Mosquito Protection

Fan

Explore More



FLASHLIGHT



Tactical EDC Flashlight Comparison Guide >>

	EDC23	EDC27 UHi	EDC29	EDC31	EDC35	EDC37
Max Output	2500 Lumens	3100 Lumens	6500 Lumens	3500 Lumens	5000 Lumens	★ 8000 Lumens
Max Throw	280 Meters	305 Meters	400 Meters	380 Meters	★ 550 Meters	420 Meters
Battery Capacity	1500mAh Li-ion Battery	1700mAh Li-ion Battery	2500mAh Li-ion Battery	3800mAh Li-ion Battery	6000mAh Li-ion Battery	★ 8000mAh Li-ion Battery
Runtime (MID Level)	3h 45min (200 Lumens)	4h 20min (200 Lumens)	3h (400 Lumens)	5h (300 Lumens)	9h 15min (300 Lumens)	8h 30min (400 Lumens)
Charging Port	USB-C	USB-C	USB-C	USB-C	USB-C	USB-C 18W Fast Charging
Button Design	Dual-Stage Tactical Buttons	Dual-Stage Tactical Buttons	Dual-Stage Tactical Buttons	Single Tactical Tail Button	Single Tactical Tail Button	Dual-Stage Tactical Buttons (One allows customization.)
Weight	101g / 3.56 oz	122g / 4.30 oz	160g / 5.64 oz	★ 100g / 3.53 oz	171g / 6.03 oz	199g / 7.02 oz
Length	★ 102.8mm / 4.05"	135.3mm / 5.33"	133.5mm / 5.26"	113.2mm / 4.46"	124.3mm / 4.89"	108.0mm / 4.25"
Material	Stainless Steel	Stainless Steel	Stainless Steel	Aluminum Alloy	7000 Series Aluminum Alloy	Stainless Steel
LUMIN SHIELD®	✗	✗	✓	✓	✓	✓
STROBE	✓	✓	✓	✗	✗	✓
Rapid Lock™	✓	✗	✓	✓	✓	✓
OLED Display	✓	✓	✓	✗	✗	✓
Brightness Level Preset	✓	✓	✓	✗	✗	✓
IP Rating	IP54	IP54	IP54	IP68	IP68	IP54



EDC

EDC Series

The EDC Series is dedicated to providing slim and compact products for EDC enthusiasts. The EDC flashlight features an ultimately slim design while offering amazing performance. The EDC27 was awarded the SHOT SHOW 2023 Best EDC Flashlight and the EDC29 was awarded the Top Flashlights of SHOT SHOW 2025, which further proves NITECORE's innovation capabilities.

HOT SALE

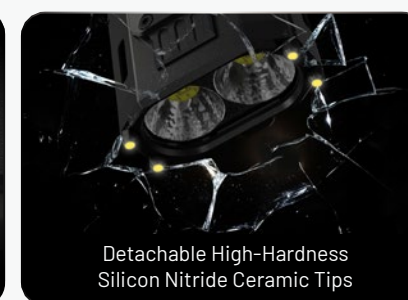
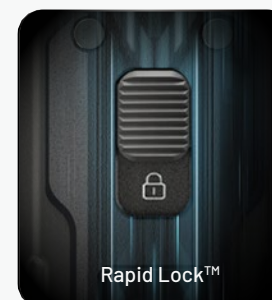
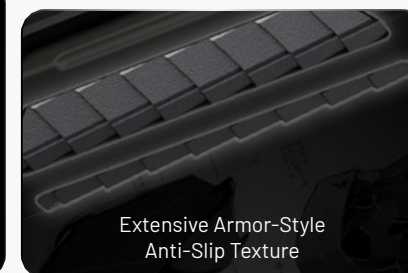
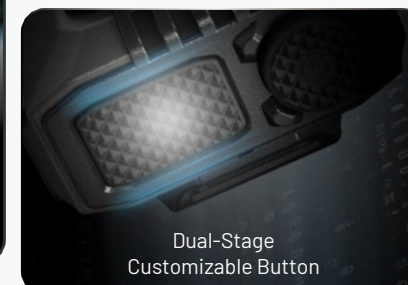
EDC37

Ultimate Tactical EDC Flashlight

- 2 × NiteLab UHI 20 MAX LEDs
- 8,000 Lumens 420 Meters
- 190 Hours 199g (7.02 oz)
- Built-in 8,000mAh Li-ion Battery
- USB-C Rechargeable



Features



Headlamp

Flashlight

Power Solution

Mosquito Protection

Fan

Explore More



High CRI Three Color Temperatures EDC Flashlight

- NiteLab MCT UHE LEDs
- 1,500 Lumens 132 Meters
- Built-in 1,500mAh Li-ion Battery
- USB-C Rechargeable
- STROBE Mode



Deep Carry Pocket Clip

2 Colors Available



High CRI Three Color Temperatures Adjustable Angle EDC Flashlight

- NiteLab MCT UHE LEDs
- 1,600 Lumens 153 Meters
- 250 Hours 114g (4.02 oz)
- Built-in 1,100mAh Li-ion Battery
- USB-C Rechargeable

102° Rotating Head



M Button

Color Temperature Adjustment / Warning Flash

Slide Switch

On / Off / Level Adjustment

Magnetic Tail



Diffuser Included

Features

CRI 97

3000K Warm Light

Ensuring accurate acquisition of real-world object details

- Rain / Fog / Smoke
- Line / Label Inspection
- Plant / Crop Observation

CRI 83

4500K Neutral White Light

Natural and soft, perfect for extended work and daily use

- Versatile Applications
- Emergency Lighting
- Low-light Work

CRI 73

6500K Cool White Light

Suitable for high-output, long-range lighting applications

- Night Patrol
- Camp Lighting
- Outdoor Exploration



Three Light Sources Ultra Slim EDC Flashlight

- NiteLab UHi 25 LED
- 1,500 Lumens 230 Meters
- 260 Hours 106g (3.74 oz)
- Built-in 1,500mAh Li-ion Battery
- USB-C Rechargeable



* Laser products are available in some countries/regions, subject to local regulations.

Features



White Light
Illuminate the View



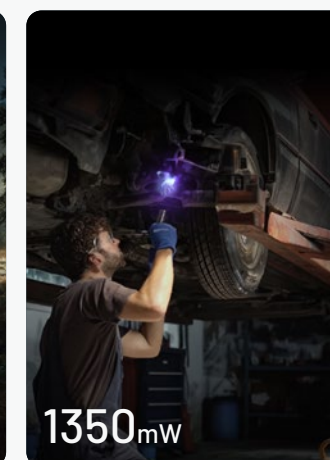
UV Light
Identification & Detection



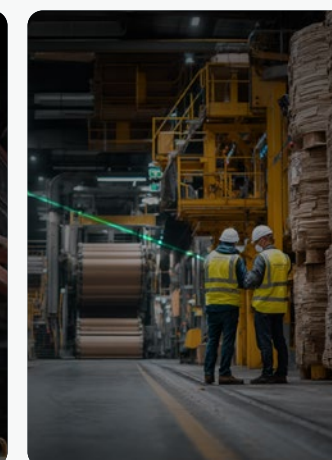
Green Laser
Positioning & Aiming



1500 Lumens



1350mW



M Button

Short Press: Light Source Switching
Press and Hold: Direct Access to Green Laser

Slide Switch

On / Off
Brightness Level Adjustment



Quick Glass Breaking

HOT SALE

EDC29

Ultra Slim High Performance EDC Flashlight

- 2 × NiteLab UHI 20 MAX LEDs
- 6,500 Lumens
- 400 Meters
- 61 Hours
- 160g (5.64 oz)
- Built-in 2,500mAh Li-ion Battery
- USB-C Rechargeable

Features



reddot winner 2025

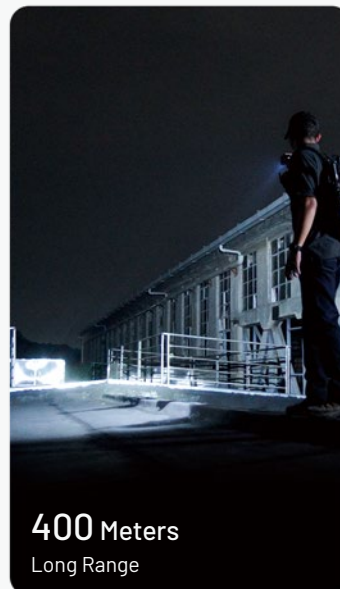


6500 Lumens
LUMIN SHIELD® + STROBE

Dual-stage Tactical Buttons



M-TURBO



400 Meters
Long Range



Extensive
Armor-Style Anti-Slip Texture

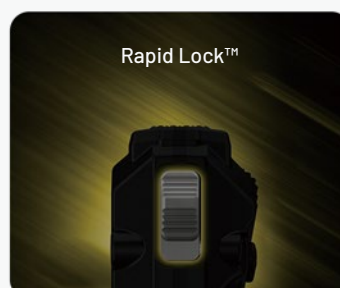
2 × UHI 20 MAX LEDs



Multifunctional OLED
Display



Rapid Lock™



EDC23

Ultra Slim Pocket Tactical EDC
Flashlight

	2 × NiteLab UHI 25 LEDs
	2,500 Lumens
	280 Meters
	Built-in 1,500mAh Li-ion Battery
	USB-C Rechargeable



EDC27 UHI

Ultra Slim Tactical EDC Flashlight

	2 × NiteLab UHI 20 LEDs
	3,100 Lumens
	305 Meters
	Built-in 1,700mAh Li-ion Battery
	USB-C Rechargeable



EDC31

Compact Tactical EDC Flashlight

	NiteLab UHI 20 MAX LED
	3,500 Lumens
	380 Meters
	Built-in 3,800mAh 18650 Li-ion Battery
	USB-C Rechargeable



EDC35

Tactical EDC Flashlight

	NiteLab UHI 40 MAX LED
	5,000 Lumens
	550 Meters
	Built-in 6,000mAh 21700 Li-ion Battery
	USB-C Rechargeable

Headlamp

Flashlight

Power Solution

Mosquito Protection

Fan

Explore More

TM

Tiny Monster Series

All of our groundbreaking Tiny Monster models have thoroughly changed the way people think about portable lights, and more importantly, what they actually carry and use. Created for search and rescue as well as outdoor adventures, our Tiny Monster series is now employed in countless professional applications where bright lighting is needed.

HOT SALE

TM9K Pro

LUMIN® SHIELD

High Output Self-Defense Tactical Flashlight

- 3 × NiteLab UHi 40 MAX LEDs
- 9,900 Lumens 510 Meters
- Built-in 5,000mAh Li-ion Battery
- USB-C Rechargeable



TM12K

TURBO/READY™

Compact and Intelligent Sharp Light

- 6 × CREE XHP50 LEDs
- 12,000 Lumens 250 Meters
- 200 Hours 233g / 8.22 oz
- Built-in 4,800mAh 21700 Li-ion Battery
- USB-C Rechargeable



TM20K

TURBO/READY™



reddot winner 2022

Ultra High Performance Tactical Searchlight

- 19 × CREE XP-L2 LEDs
- 20,000 Lumens 290 Meters
- Built-in Li-ion Battery
- USB-C Rechargeable



TM39

Ultra High Performance Superior Searchlight

- LUMINUS SBT-90 GEN2 LED
- 5,200 Lumens 1,500 Meters
- NBP68HD Battery Pack
- DC Rechargeable



Headlamp

Flashlight

Power Solution

Mosquito Protection

Fan

Explore More

P Precise Series

NITECORE Precise Series flashlights are highly innovative illumination tools purpose-designed for law enforcement, hunting and tactical applications. With blazingly bright output in TURBO/STROBE mode, exceptionally long runtimes in low mode and unique gun-mounting functionality, the Precise series flashlights are the ultimate lighting tools for increased tactical effectiveness.

STROBE READY !™
ULTIMATE ONE-HANDED OPERATION

The Strobe Ready™ is designed with the lever principle, providing a maximum ease of use with glove.



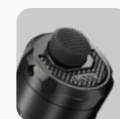
P20iX

STROBE READY !™
ULTIMATE ONE-HANDED OPERATION

Xtreme Performance i-Generation 21700 Tactical Flashlight

- 4 × CREE XP-L2 V6 LEDs
- 4,000 Lumens 221 Meters
- 1 × 21700i Series Battery, 2 × CR123
- USB-C Rechargeable

Features



Inset Pedal Design with dual tail switches

- + STROBE Mode uses randomly changing frequencies for stronger dizzying effects
- + Tactical Mode and Daily Mode available
- + The power indicator indicates the remaining battery power



Strike bezel uses high strength silicon nitride ceramics

NTR10 Tactical Ring Pro compatible

Anti-impact reverse polarity protection mechanism for shooting sports

Compatible with various i Series modular extensions



RSW2i
USB-C Remote Switch



RSW2i WL
Wireless Remote Switch



TSL10i
Tail Cap Signal Light



Security



Search & Rescue



Self Defense

P20i UV

STROBE READY !™
ULTIMATE ONE-HANDED OPERATION

i-Generation 21700 White + UV Dual Output Flashlight

- Luminus SST-40-W LED + 4 × UV LEDs
- 1,800 Lumens 337 Meters
- 320mW 365nm USB-C Rechargeable
- 1 × 21700 i Series Battery, 2 × CR123/RCR123



P20UV V2

STROBE READY !™
ULTIMATE ONE-HANDED OPERATION

White + UV Dual Output Tactical Flashlight

- CREE XP-L2 V6 LED + 4 × UV LEDs
- 1,000 Lumens 164 Meters
- 320mW 365nm USB-C Rechargeable
- 1 × 18650, 2 × CR123/RCR123



P10iX

STROBE READY!
ULTIMATE ONE-HANDED OPERATION

Xtreme Performance i-Generation 21700 Ultra Compact Flashlight

- 4 × CREE XP-L2 V6 LEDs
- 4,000 Lumens 158 Meters
- 1 × 21700 i Series Battery, 2 × CR123/RCR123
- USB-C Rechargeable



P10i

STROBE READY!
ULTIMATE ONE-HANDED OPERATION

i-Generation 21700 Ultra Compact Tactical Flashlight

- Luminus SST-40-W LED
- 1,800 Lumens 290 Meters
- 1 × 21700 i Series Battery, 2 × CR123/RCR123
- USB-C Rechargeable



P23i

STROBE READY!
ULTIMATE ONE-HANDED OPERATION

i-Generation Long Range 21700 Tactical Flashlight

- Luminus SFT-70 LED
- 3,000 Lumens 470 Meters
- 1 × 21700 i Series Battery
- USB-C Rechargeable



NEW P30

Next Generation 21700 Hunting Flashlight

- CREE XP-L HI V3 LED
- 1,000 Lumens 618 Meters
- 1 × 21700 / 1 × 18650
2 × CR123/RCR123



NEW P30 KIT

NEW P40



Ultra-Long Throw Dual Beam LEP Flashlight

- 5 × Floodlight LEDs, Class 1 LEP Light
- 2,000 Lumens 2,900 Meters
- 1 × 21700
- USB-C Rechargeable

* Laser products are available in some countries/regions, subject to local regulations.



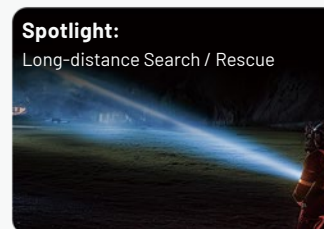
18W USB-C
Fast Charging

Features

Adaptive Cruise Mode Automatic Brightness Control



Spotlight / Floodlight Adjustment



P30i

i-Generation 21700 High Output Searchlight

- CREE XHP35 HI LED
- 2,000 Lumens 1,000 Meters
- 1 × 21700 i Series Battery
2 × CR123/RCR123
- USB-C Rechargeable



P30i KIT



E Explorer Series

Explorer Series flashlights feature a single-button design with a straightforward and intuitive user interface in a compact size. They are ideal for work, search, rescue, and general use, delivering unprecedented output performance and an exceptional lighting experience.

NEW EX7

Variable Beam Pattern High Performance Flashlight

- 4 × NiteLab M515S LEDs
- 6,000 Lumens
- 500 Meters
- 570 Hours
- 140g (4.94 oz)
- 1 × 21700
- USB-C Rechargeable



Features



Global Debut
M515S Array LED



Central
High Luminous Density &
Long Throw Core



Peripheral
High Efficiency
Flood Core

Three Beam Patterns

Spotlight / Floodlight / Mixed Light

Spotlight: search / rescue



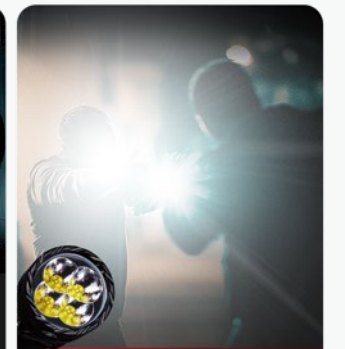
Floodlight: pathway lighting, area lighting



Mixed Light: general use



6000-Lumen



Randomly Changing
STROBE Mode



IP68
All-Weather Applicable
2m Submersible
2m Impact Resistant



500 Meters
Max Throw



Two-Way Clip Included



Headlamp

Flashlight

Power Solution

Mosquito Protection

Fan

Explore More



MH

Multitask Hybrid Series

NITECORE Multitask Hybrid (MH) dual-fuel rechargeable flashlights are a line of highly versatile and practical illumination tools designed for a multitude of users and applications. Featuring a high-precision long-range reflector, well-spaced brightness settings plus STROBE and SOS modes, the MH series is the ultimate lighting tools for hunting, trekking, camping, law enforcement, search and rescue.

HOT SALE

MH12 Pro

Superior Performance USB-C Rechargeable Compact Flashlight

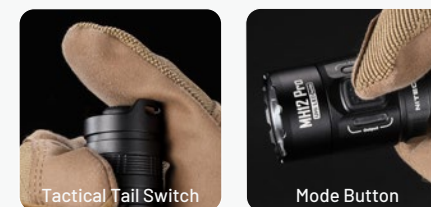
- NiteLab UHi 40 LED
- USB-C Rechargeable
- 3,300 Lumens
- 505 Meters
- 1 × 21700

Features

Intuitive Indicators



User-Friendly Operation



Detachable Two-Way Clip Included



High Capacity Li-ion Battery Included (NL2153HP 5,300mAh)



MH12 Pro KIT

MH10 V2

Next Generation 21700 Dual Fuel EDC Flashlight

- CREE XP-L2 V6 LED
- USB-C Rechargeable
- 1,200 Lumens
- 202 Meters
- 1 × 21700, 1 × 18650, 2 × CR123/RCR123

MH11

USB-C Rechargeable Ultra Compact Flashlight

- CREE XP-L2 V6 LED
- USB-C Rechargeable
- 1,000 Lumens
- 190 Meters
- 1 × 18650, 2 × CR123/RCR123



Headlamp

Flashlight

Power Solution

Mosquito Protection

Fan

Explore More



MH40 Pro

Ultra Bright Long Range Hunting Flashlight

- NiteLab UHi 40 MAX LED
- USB-C Rechargeable
- 3,500 Lumens
- 1,300 Meters
- NITECORE NBP100R Li-ion Battery Pack, 2 × 21700

Features



2.4G Wireless Control

Multiple Tactical Accessories Included:



Hook-and-Loop Fastener



Picatinny Rail Mounts (Optional)



Hook-and-Loop Straps



NBP100R Li-ion Battery Pack Included (10,000mAh)



MH40 Pro KIT

MH25 Pro

Ultra Long Range USB-C Rechargeable Flashlight

- NiteLab UHi 40 LED
- 3,300 Lumens
- 705 Meters
- 1 × 21700
- USB-C Rechargeable



MH25 Pro KIT



High Capacity Li-ion Battery Included (NL2153HP 5,300mAh)

Smart Ring Tactical Series

NITECORE SRT Series features 4th generation SSR (Smart Selector Ring) technology, offering variable brightness adjustment and unprecedented ease of use. The SSR interface allows users to select modes and brightness levels by simply rotating a smooth magnetic ring. This industry leading design is both user-friendly and extremely durable, making it ideal for law enforcement and tactical applications.



4th Generation Smart Selector Ring



SRT6i

High Performance SmartRing Tactical Flashlight

- 2,100 Lumens
- 510 Meters
- 1 × 21700 i Series Battery, 2 × CR123/RCR123
- USB-C Rechargeable



Security



Military & Law Enforcement

Chameleon Series

The Chameleon Series is yet another unique and innovative offering from NITECORE. Featuring the white output and another choice of Red, Green, Blue, Ultraviolet or Infrared, Chameleon flashlights offer incredible versatility for a wide range of applications. The latest model has an easy and unique switching mechanism combined with our patented STROBE READY™ Technology.

CI7

STROBE READY!™
ULTIMATE ONE-HANDED OPERATION

Dual Output Tactical IR Flashlight

- 4 × CREE XP-G3 S3 LEDs + 4 × Luminus SST-10-IR LEDs
- 2,500 Lumens
- 279 Meters
- 7,000mW 940nm
- 1 × 18650, 2 × CR123/RCR123

3 output levels

LOW
1,000mW

MID
3,000mW

HIGH
7,000mW



Easy dual beam switching mechanism between IR and white beams



MT Multi-Task Series

Multi-Task flashlight series is a line of highly versatile and practical illumination tools designed for a multitude of users and environments. A sleek, robust body finely etched with extensive knurling and a perfect finish is a hallmark of this range, but even more important is the highly practical and usable user-interface which makes selecting modes a breeze. NITECORE MT series flashlights are your ultimate lighting tools for various environments.

MT1A Pro

High Output Compact Rechargeable AA Flashlight

- NiteLab UHi 25 LED
- 800 Lumens 250 Meters
- 1 × NITECORE NL1411R (1,100mAh) 14500 Li-ion Battery, 1 × AA



HOT SALE

MT2A Pro

High Performance Rechargeable AA Flashlight

- NiteLab UHi 20 LED
- 1,000 Lumens 255 Meters
- 1 × NITECORE NL1416R (1,600mAh) 14100 Li-ion Battery, 2 × AA



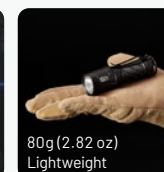
MT1C Pro

High Output Compact Tactical Flashlight

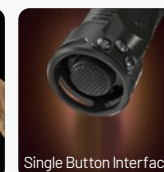
- NiteLab UHi 20 LED
- 1,000 Lumens 360 Meters
- 1 × NITECORE NL1816R (1,600mAh) 18350 Li-ion Battery, 1 × CR123/RCR123



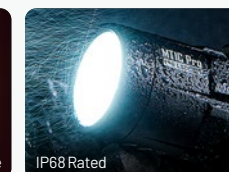
1000 Lumens | 360 Meters



80g (2.82 oz)
Lightweight



Single Button Interface



IP68 Rated

MT2C Pro

High Output Compact Tactical Flashlight

- NiteLab UHi 20 LED
- 1,800 Lumens 520 Meters
- 1 × NITECORE NL1836R (3,600mAh) 18650 Li-ion Battery, 2 × CR123/RCR123



Headlamp

Flashlight

Power Solution


Mosquito Protection

Fan


Explore More


MT06MD

Pocket Medical AAA Penlight

 Nichia 219B LED

 180 Lumens

 58 Meters

 2 × AAA

Features



High CRI Output (CRI ≥ 90)
Photobiologically Safe (RG0)




Default low mode setting





Medical


MT10C

Ultra Compact Tactical White + Red Flashlight

 CREE XM-L2 U2 LED

 920 Lumens

 190 Meters

 1 × IMR18350, 1 × CR123/RCR123


MT10C ARC Rail Helmet Light Set


MT10C + LMA1





MT21C

Multifunctional 90° Adjustable Flashlight

 CREE XP-L HD V6 LED

 1,000 Lumens

 184 Meters

 1 × 18650, 2 × CR123/RCR123



90° adjustable head

Single side switch

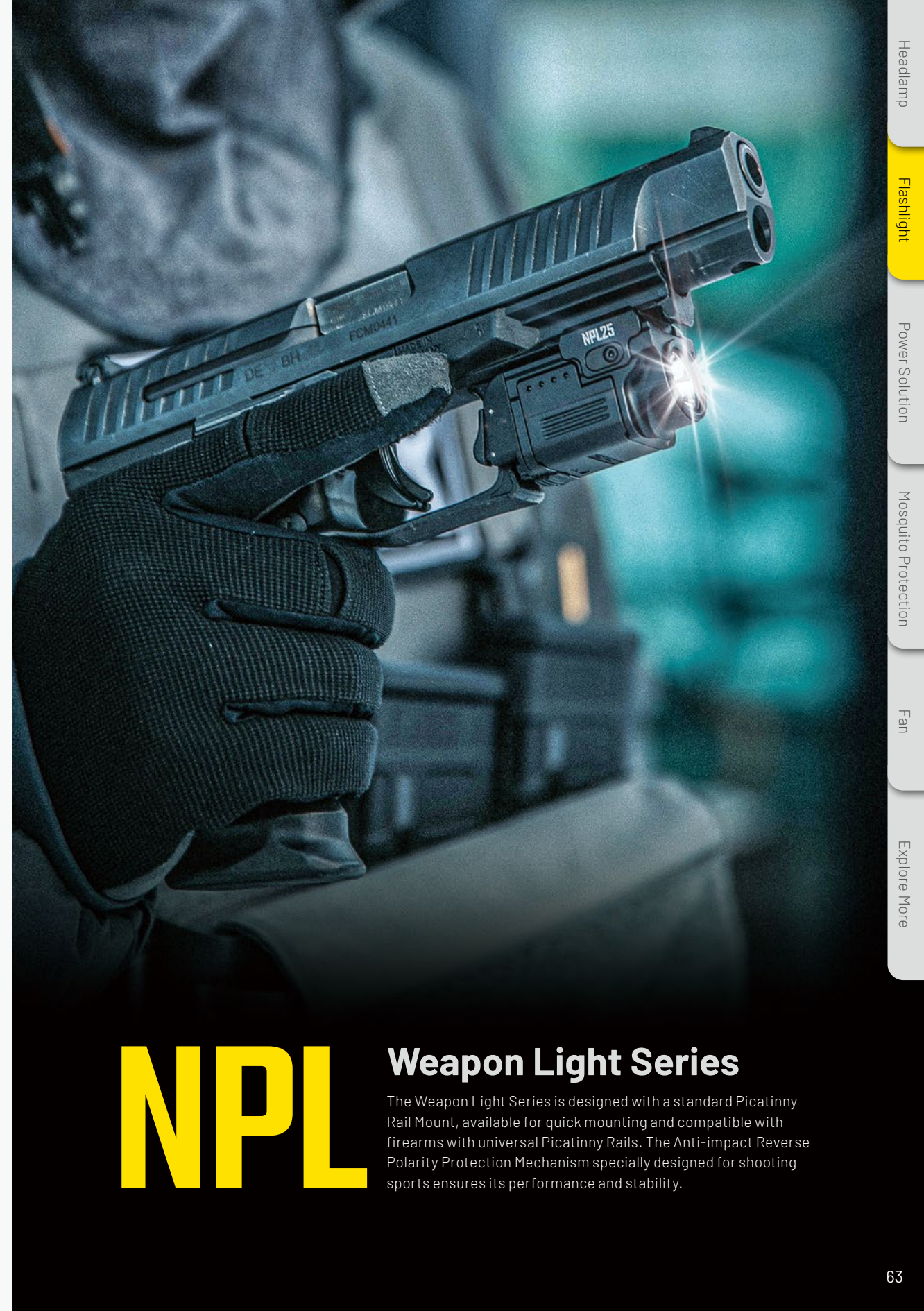


Industrial
Workplace



EDC


Magnetic



NPL

Weapon Light Series

The Weapon Light Series is designed with a standard Picatinny Rail Mount, available for quick mounting and compatible with firearms with universal Picatinny Rails. The Anti-impact Reverse Polarity Protection Mechanism specially designed for shooting sports ensures its performance and stability.



NPL25 GL

Green Laser Compact Tactical Light

- NiteLab UHI 25 LED
- 900 Lumens 216 Meters
- 520nm Green Laser
- Detachable 500mAh Li-ion Battery

* Laser products are available in some countries/regions, subject to local regulations.



NPL25

Compact Tactical Light

- NiteLab UHI 20 LED
- 900 Lumens 255 Meters
- Detachable 500mAh Li-ion Battery



NPL27

Compact Tactical Light

- 650 Lumens 410 Meters
- Detachable 500mAh Li-ion Battery



NEW NPL35

High-Output Long-Range Tactical Light

- 2,000 Lumens 412 Meters
- Detachable 1,900mAh Li-ion Battery
- STROBE Mode



NEW PLC500

USB-C Dual-Slot Charger For PLB500 Battery Only

- USB-C Port
- 500mA*2
Dual Slots
- 71g / 2.50 oz



Quick Release Battery



T Series

T Series is a collection of mini keychain lights designed for everyday carry. Small yet powerful, each light comes with powerful features in an extremely mini package. With a built-in Li-ion battery and a Micro-USB / USB-C port, it offers flexible charging options and ultimate convenience of use, making it the best EDC gadget that you will carry every day.

NEW TUP2



Intelligent Three Color Temperatures Keychain Light

- 4 × NiteLab MCT UHE LEDs
- 1,200 Lumens
- 125 Meters
- Built-in 1,300mAh Li-ion Battery
- USB-C Rechargeable



Dual-button Interface

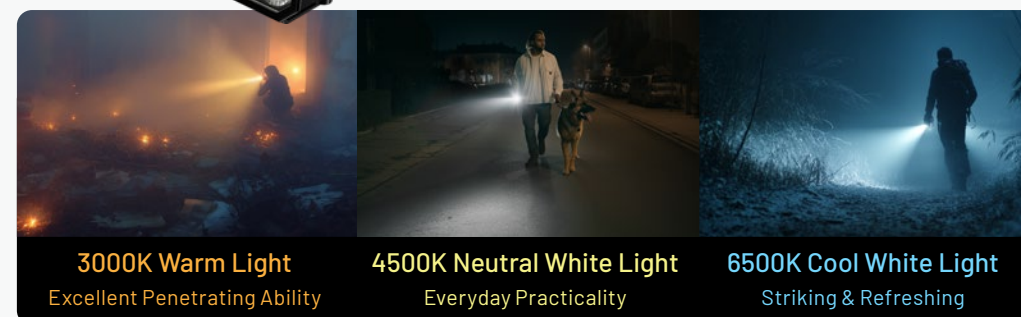
Features

- + Level Preset Function
- + 2 Lockout Modes

3 Colors Available



Four LEDs
All with Three Color Temperatures



Multifunctional OLED Real-time Display



NEW TIP3



Multiple Color Temperatures Metallic Keychain Light

- NiteLab MCT UHE LEDs
- 720 Lumens
- 92 Meters
- Built-in 650mAh Li-ion Battery
- USB-C Rechargeable



Detachable Clip

Features

- + 2 Lockout Modes

3 Colors Available



TINI3



Intelligent Multiple Color Temperatures Keychain Light

- NiteLab MCT UHE LEDs
- USB-C Rechargeable
- 600 Lumens
- 90 Meters
- Built-in 330mAh Li-ion Battery



Features

- + 2m Impact Resistant
- + 2 Lockout Modes Available
- + Advanced Power Cut-Off (APC) Technology

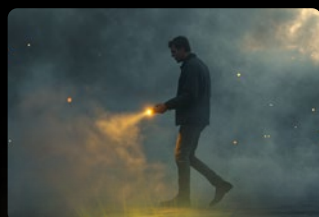
3 Colors Available



Dual Buttons Design

Dual Lights

Both with Three Color Temperatures



3000K Warm Light

Excellent Penetrating Ability

Meeting the needs of walking in rainy or foggy days, escaping from fire and so on



4500K Neutral White Light

Everyday Practicality

Suitable for various daily activities like walking a dog, reading and emergency lighting



6500K Cool White Light

Striking & Refreshing

Ideal for nighttime walking and casual hiking

Multifunctional OLED Real-time Display



T4K

Quad-Core Intelligent Keychain Light

- 4 × CREE XP-L2 V6 LEDs
- 4,000 Lumens
- 209 Meters
- Built-in Li-ion Battery
- USB-C Rechargeable



HOT SALE

The TIKI Family



TIKI / TIKI LE



Mini Futuristic Keychain Lights	TIKI	TIKI GITD	TIKI GITD BLUE	TIKI LE	TIKI UV
Max Output	300 Lumens				1,000mW
Primary Emitter	OSRAM P8 LED				Luminus SST-10-UV LED
Auxiliary Emitters	High CRI White LED			Red LED	2 × High CRI White LEDs
	UV LED (500mW, 365nm)			Blue LED	
Built-in Li-ion Battery	✓	✓	✓	✓	✓
USB-C Rechargeability	✓	✓	✓	✓	✓
Glow in the Dark	✗			✗	✗

THUMB

Portable and Tiltable Work Light

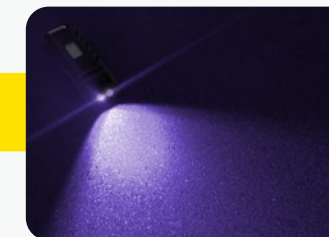
- 2 × High Performance LEDs
- 85 Lumens
- 26 Meters
- Built-in Li-ion Battery
- USB-C Rechargeable



THUMB LEO

Portable and Tiltable Work Light Law Enforcement Version

- 45 Lumens
- 24 Meters
- 500mW 365nm
- USB-C Rechargeable



TUBE V2.0

Tiny USB Keychain Light

- High Performance LED
- 55 Lumens
- 25 Meters
- Built-in Li-ion Battery
- USB-C Rechargeable



Multiple Colors Available



Headlamp

Flashlight

Power Solution

Mosquito Protection

Fan

Explore More



Lantern Series

NITECORE Lantern series products are professionally designed for camping. With a CRI rating ≥ 90 , the lanterns emit a beam that is closer to natural daylight to avoid eye fatigue and reveal subtle details of objects. A single switch controls all brightness levels and modes, ideal for camping, excursion, working at night, night photography, everyday carry and so on.

LR40

Multifunctional USB-C Rechargeable Camping Lantern

- 100 Lumens (360° Omnidirectional Illumination)
- USB-C Rechargeable
- USB-A Output
- 65 Hours
- Built-in 4,000mAh Li-ion Battery

2 Colors Available



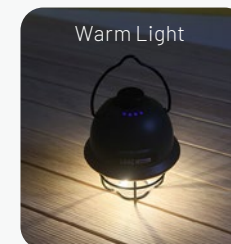
Features

Stepless Brightness Adjustment

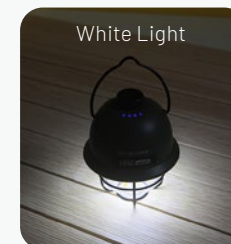


3 Light Sources Available

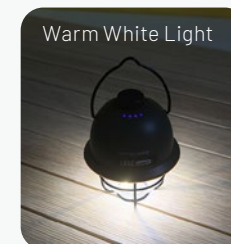
Warm Light



White Light



Warm White Light



LR70

3-in-1 Rechargeable Lantern Flashlight

- 2 × Luminus SST40 LEDs + 20 × High CRI LEDs
- Flashlight Mode: 3,000 Lumens
Lantern Mode: 400 Lumens
- 10,000mAh Power Supply
- USB-C Rechargeable

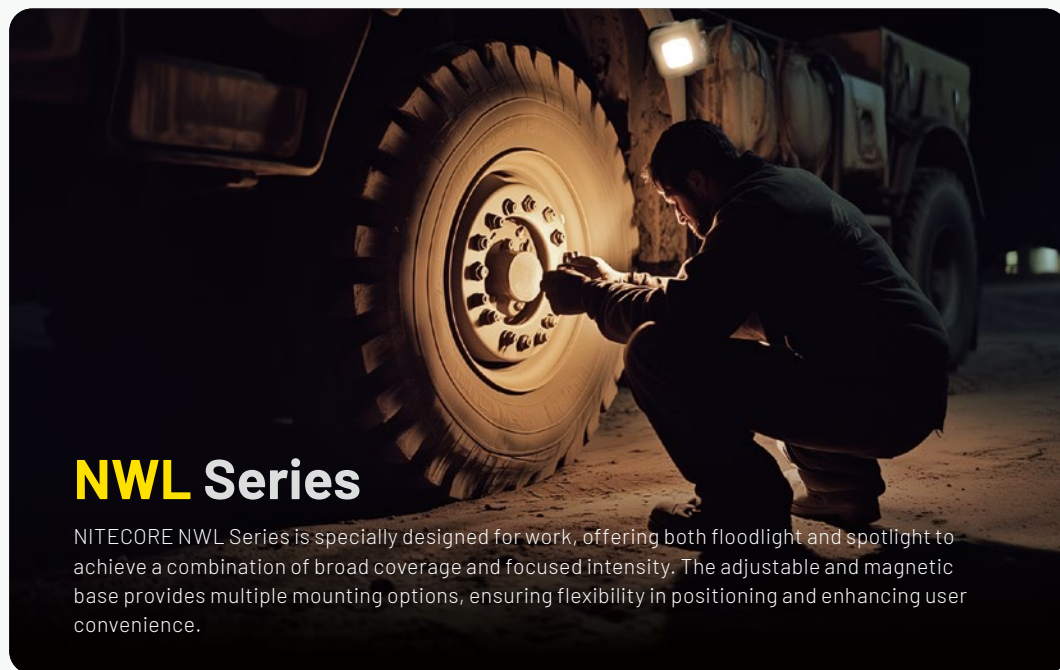


Lantern



Flashlight





NWL Series

NITECORE NWL Series is specially designed for work, offering both floodlight and spotlight to achieve a combination of broad coverage and focused intensity. The adjustable and magnetic base provides multiple mounting options, ensuring flexibility in positioning and enhancing user convenience.

NWL20

Multifunctional Triple Output Work Light

Floodlight: 600 Lumens 43 Meters

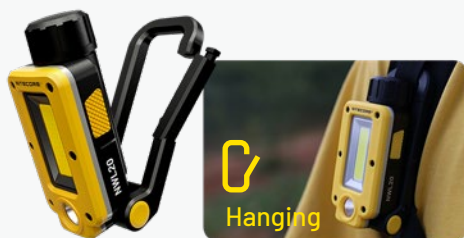
Spotlight: 290 Lumens 93 Meters

Replaceable 21700 Li-ion Battery

USB-C Rechargeable



Multiple Mounting Options



0° - 180° Adjustable Base

NWL30

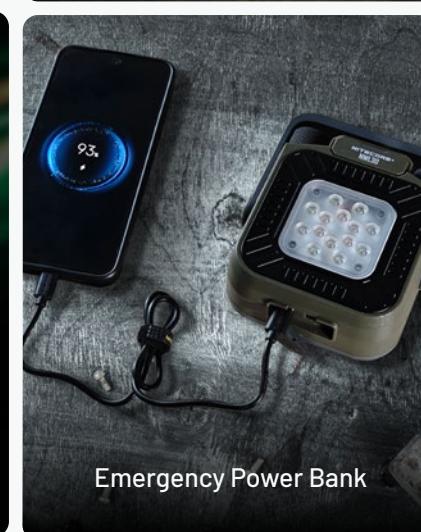
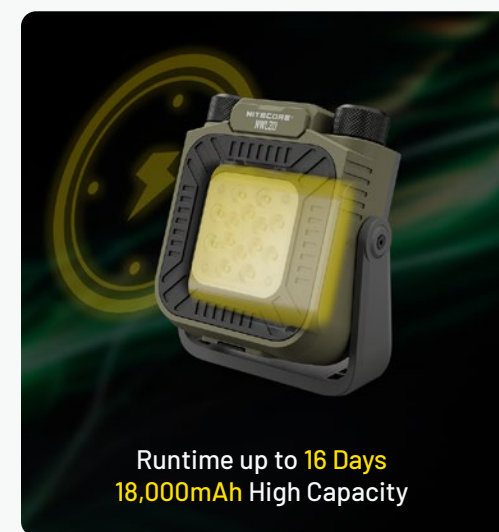
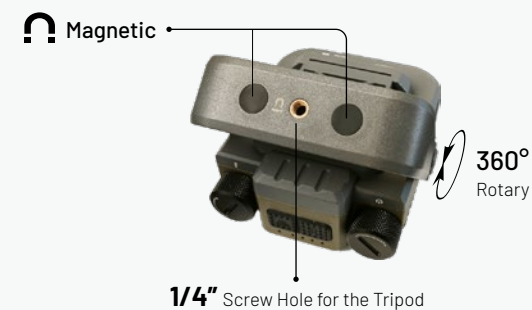
3-in-1 Outdoor Work Light

3,000 Lumens 120 Meters

130 Hours USB-C Rechargeable

Built-in 18,000mAh Battery

Features



CL Series

The CL Series is a professional line of clip-on lights designed for law enforcement, security, and patrolling. These lights feature red/blue warning flashing to indicate identity, provide clear warnings and deterrence, and effectively ensure safety during night duty.



CL10

Multipurpose Ultra Lightweight Clip-on Light

☀ 45 Lumens

📏 15 Meters

🕒 28 Hours

👤 28g (0.99 oz)

🔋 2 × AAA



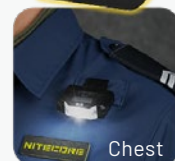
Features



☀ Red/Blue Warning Flashing



Versatile Clip



Approx.
180°
Adjustable



GEM Series

GEM series is professionally designed for gemstones identification, featuring high output and great penetrability. An innovative rotary switch for infinite brightness levels. Multiple light sources optional, making the series perfect for gemstones, jewelries and treasures inspection.

GEM8

Professional Gemstone Identification Light

☑ CREE XP-L HI V3 LED

☀ 500 Lumens

📏 39 Meters

🔋 1 × 18650,
2 × CR123/RCR123



GEM10 UV

Professional Gemstone Identification UV Light

☑ UV LED

☀ 3000mW 365nm

🔋 1 × 18650,
2 × CR123/RCR123



DL Series

A flashlight for diving needs to be totally waterproof and reliable, with high output and flexibility. NITECORE DL Series is specially designed for underwater activities, offering multiple modes for underwater lighting.

DL30

Dive Light

☀ 1,100 Lumens

📏 100 Meters Submersible

👤 273g / 9.63 oz (in Air), 126g / 4.44 oz (Underwater)

🔋 NITECORE NL2153R 21700 Li-ion Battery (5,300mAh)

Features

5 Flashing Frequencies:

SOS, QUICK FLASHING, FLASHING/1s, FLASHING/2s, FLASHING/3s



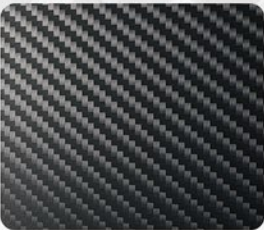
Power Solution



NB10000 Gen4

Ultra Lightweight Competition-Grade Power Bank

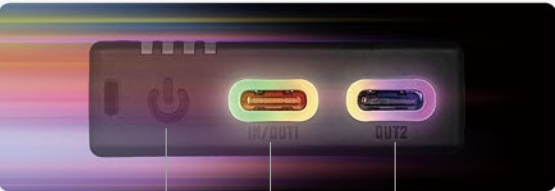
- 10,000mAh 3.9V (39Wh)
- 22.5W Max Input & Output
- 143g (5 oz)



Carbon Fiber Shell



Knock to Wake



Touch Button Dynamic RGB Light



NEW



NB10000 Gen4

	Ultra Lightweight Competition-Grade Power Bank
Capacity	10,000mAh 3.9V (39Wh)
Rated Energy	6,800mAh 5V (TYP 3A) / 7,200mAh 5V (TYP 1A)
Input	USB-C (IN): 5V=3A / 9V=2.22A / 12V=1.87A (22.5W MAX)
Output	USB-C (OUT1) / (OUT2): 5V=3A / 9V=2.22A / 12V=1.87A (22.5W MAX) Total Output: 5V=3A (15W MAX)
Dimensions	116mm × 46.8mm × 14.5mm (4.57" × 1.84" × 0.57")
Weight	143g±5g (5 oz±0.1 oz)

HOT SALE



NB10000

	Ultra Lightweight Carbon Fiber Energy Brick
Capacity	10,000mAh 3.85V (38.5Wh)
Rated Energy	6,400mAh 5V (TYP 1A)
Input	USB-C: 5V=2.4A / 9V=2A (18W MAX)
Output	USB-C: 5V=3A / 9V=2.22A / 12V=1.68A (20W MAX) USB-A: 5V=3A / 9V=2A / 12V=1.5A (18W MAX) Dual Ports: 5V=3A (15W MAX)
Dimensions	121.9mm × 59mm × 10.6mm (4.8" × 2.32" × 0.42")
Weight	150g±5g (5.29 oz±0.1 oz)

NEW



NB Plus

	Waterproof Competition-Grade Energy Bar
Capacity	10,000mAh 3.85V (38.5Wh)
Rated Energy	5,600mAh 5V (TYP 3A)
Input	USB-C: 5V=3A / 9V=2A (18W MAX)
Output	USB-C: 5V=3A / 9V=2.22A / 12V=1.68A / 10V=2.25A (22.5W MAX) USB-A: 5V=3A / 9V=2A / 12V=1.5A / 10V=2.25A (22.5W MAX) Total Output: 5V=3A (15W MAX)
Dimensions	122.4mm × 59.6mm × 11.7mm (4.82" × 2.35" × 0.46")
Weight	155g±5g (5.47 oz±0.1 oz)



NB Air

	Waterproof Competition-Grade Energy Bar
Capacity	5,000mAh 3.88V (19.4Wh)
Rated Energy	3,300mAh 5V (TYP 2.4A)
Input	USB-C: 5V=2.4A / 9V=2A (18W MAX)
Output	USB-C: 5V=2.4A / 9V=2A / 12V=1.5A (18W MAX)
Dimensions	112.0mm × 48mm × 9.7mm (4.41" × 1.89" × 0.38)
Weight	89g±5g (3.14 oz±0.1 oz)



NB20000 Gen3

	Ultra Lightweight Carbon Fiber Power Bank
Capacity	20,000mAh 3.6V (72Wh)
Rated Energy	11,220mAh 5V (TYP 3A)
Input	USB-C (IN1) / (IN2): 5V=2A / 9V=2A (18W MAX)
Output	USB-C (OUT1) / (OUT2): 5V=3A / 9V=2.22A / 12V=1.68A / 10V=2.25A (22.5W MAX) Dual Ports: 5V=3A (15W MAX)
Dimensions	118.0mm × 69.0mm × 21.5mm (4.65" × 2.72" × 0.85")
Weight	291g±5g (10.26 oz±0.1 oz)



NW5000

	Carbon Fiber Magnetic Wireless Power Bank
Capacity	5,000mAh 3.85V (19.25Wh)
Rated Energy	3,000mAh 5V (TYP 1A)
Input	USB-C: 5V=2.4A / 9V=2A / 12V=1.5A
Output	USB-C: 5V=2.4A / 9V=2.22A / 12V=1.67A Wireless: 5W / 7.5W / 10W / 15W
Dimensions	67.2mm × 99.7mm × 10.6mm (2.65" × 3.93" × 0.42")
Weight	120g±5g (4.23 oz±0.1 oz)



CARBO 10000 Gen2

Professional Outdoor Fast-Charge Power Bank

Capacity	10,000mAh 3.88V (38.8Wh)
Rated Energy	7,000mAh 5V (TYP 3A)
Input	USB-C (IN): 5V=2A / 9V=3A / 12V=2.5A (30W MAX)
Output	USB-C (OUT1) / (OUT2): 5V=3A / 9V=3A / 12V=2.5A / 15V=2A / 10V=2.25A (30W MAX) Total Output: 5V=3A (15W MAX)
Dimensions	126.5mm × 48.0mm × 15.8mm (4.98" × 1.89" × 0.62")
Weight	170g±5g (6.00 oz±0.1 oz)



CARBO 20

Waterproof High Power Carbon Fiber Power Bank

Capacity	20,000mAh
Rated Energy	13,500mAh 5V (TYP 3A)
Input	USB-C (IN): 5V=3A / 9V=3A / 12V=3A / 15V=3A / 20V=3.25A (65W MAX)
Output	USB-C (OUT1) / (OUT2): 5V=3A / 9V=3A / 12V=3A / 15V=3A / 20V=3.25A (65W MAX) Total Output: 5V=3A (15W MAX)
Dimensions	128mm × 48mm × 29mm (5.04" × 1.89" × 1.14")
Weight	320g±5g (11.29 oz±0.1 oz)



POCKET 5

Built-in USB-C Cable Pocket Power Bank

Capacity	5,000mAh
Rated Energy	3,400mAh 5V (TYP 2.4A)
Input	USB-C (C1) / (C2): 5V=2.4A / 9V=2A (18W MAX)
Output	USB-C (C1) / (C2): 5V=2.4A / 9V=2.22A / 12V=1.67A / 10V=2.25A (22.5W MAX) Total Output: 5V=3A (15W MAX)
Dimensions	102mm × 70mm × 9mm (4.02" × 2.76" × 0.35")
Weight	125g±5g (4.41 oz±0.1 oz)



POCKET 10000

Carbon Fiber Pocket Power Bank

Capacity	10,000mAh 3.85V (38.5Wh)
Rated Energy	6,200mAh 5V (TYP 3A)
Input	UCB-C Cable: 5V=3A / 9V=2A / 12V=1.5A (18W MAX) USB-C Port: 5V=3A / 9V=2A / 12V=1.5A (18W MAX)
Output	UCB-C Cable: 5V=3A / 9V=2.22A / 12V=1.67A (20W MAX) USB-C Port: 5V=3A / 9V=2.22A / 12V=1.67A / 10V=2.25A (22.5W MAX) Total Output: 5V=3A (MAX)
Dimensions	105mm × 70mm × 12.5mm (4.13" × 2.76" × 0.49")
Weight	160g ±5g (5.64 oz±0.1 oz)



SUMMIT 10000

Low Temperature Resistant Carbon Fiber Power Bank

Capacity	10,000mAh 3.85V (38.5Wh)
Rated Energy	6,400mAh 5V (TYP 1A)
Input	USB-C: 5V=2.4A / 9V=2A
Output	USB-C: 5V=3A / 9V=2.22A / 12V=1.68A USB-A: 5V=3A / 9V=2A / 12V=1.5A Dual Ports: 5V=3A (MAX)
Dimensions	125.5mm × 63.5mm × 14.5mm (4.94" × 2.50" × 0.57")
Weight	175g±5g (6.17 oz±0.1 oz)




SUMMIT 20000

Low Temperature Resistant Carbon Fiber Power Bank


Capacity	20,000mAh 3.85V (77Wh)
Rated Energy	13,500mAh 5V (TYP 2A)
Input	USB-C: 5V=2.4A / 9V=2A
Output	USB-C: 5V=3A / 9V=2.22A / 12V=1.68A USB-A: 5V=3A / 9V=2A / 12V=1.5A Dual Ports: 5V=3A (MAX)
Dimensions	124mm × 60mm × 21.8mm (4.88" × 2.36" × 0.86")
Weight	315g±5g (11.11 oz±0.1 oz)



► Rechargeable Li-ion Batteries

	Model	Specification	Capacity
 <p>NITECORE rechargeable Li-ion batteries feature higher energy intensity, better power storage and longer runtime compared to other batteries, and environmental-friendly that can be recharged for over 500 times.</p>	NL1410	14500	1000mAh
	NL166	16340	650mAh
	NL169	16340	950mAh
	NL1823	18650	2300mAh
	NL1834	18650	3400mAh
	NL1836	18650	3600mAh
	NL1840	18650	4000mAh
	NL2150	21700	5000mAh
	NL2155	21700	5500mAh
	NL2160	21700	6000mAh

► USB-C Rechargeable Li-ion Batteries

	Model	Specification	Capacity
 <p>With a built-in USB-C port, it is convenient to charge the rechargeable Li-ion batteries via a USB cable.</p>	NL1411R	14500	1100mAh
	NL169R	16340	950mAh
	NL1816R	18350	1600mAh
	NL1834R	18650	3400mAh
	NL1836R	18650	3600mAh
	NL2150RX	21700	5000mAh
	NL2155HPR	21700	5500mAh

► High Performance Batteries

	Model	Specification	Capacity	Discharge Current
 <p>Specially designed for high performance products, it features high discharge current and excellent output with resistance to extreme conditions, capable of driving your devices to the best performance.</p>	NL1836HP	18650	3600mAh	8A
	NL1840HP	18650	4000mAh	10A
	NL2155HP	21700	5500mAh	20A
	NL2155HPR	21700	5500mAh	20A
	NL2160HP	21700	6000mAh	20A

► USB-C Rechargeable Li-ion AA Battery

Model	NH2400
Rated Capacity	2400mAh
Rated Energy	3600mWh
Nominal Voltage	1.5V
Input	USB-C: 5V=0.5A
Feature	USB-C Rechargeable

Power Your Devices

Camera	Clock	Smart Door Lock	Remote	Camping Lantern	Basic Flashlight
Wireless Keyboard and Mouse	Electric Toy	Gamepad	Ear Thermometer	Early Childhood Education Equipment	Care Product



21700 Intelligent Battery System

21700 i Series Battery	ML21 Magnetic Light	MPB21 Magnetic Power Bank
NL2150HPi	Brightness	80 Lumens
NL2155HPi	CRI	≥ 90
NL2160HPi	Color Temperature	4000-4500K
	Runtime	19h (NL2150HPi)
	Beam Diameter	12m
	Peak Beam Intensity	9cd
	Input	5V = 2A (MAX)
	Output Voltage	4.2V±1% (Battery)
	Output Current	5V±5% (USB)
		2A (MAX)

► 21700 i Series Battery

Model	Specification	Capacity	Discharge Current
NL2150HPi	21700	5000mAh	15A
NL2155HPi	21700	5500mAh	20A
NL2160HPi	21700	6000mAh	20A

As a patent product developed by NITECORE, the 21700 i Series Battery is a proprietary 21700 rechargeable Li-ion battery featuring dual way output with positive and negative polarities at both ends and a high energy density.

Charger



UI1



1 BATTERY SLOT

Portable USB-C Battery Charger

UI1 SPEC

Compatible with	IMR / Li-ion
Input	DC 5V/1A 5W
Output voltage	4.2V±1%
Output current	1,000mA (MAX)



UI2



2 BATTERY SLOTS

Portable Dual-Slot USB-C Battery Charger

UI2 SPEC

Compatible with	IMR / Li-ion
Input	DC 5V/2A 10W
Output voltage	4.2V±1%
Output current	1,000mA*2 (MAX)

UI1 & UI2
Compatible with

IMR/Li-ion: 10340, 10350, 10440, 10500, 12340, 12500, 12650, 13450, 13500, 13650, 14430, 14500, 14650, 16500, 16340(RCR123), 16650, 17350, 17500, 17650, 17670, 18350, 18490, 18500, 18650, 20700, 21700, 22500, 22650, 25500, 26500, 26650

UM2



2 BATTERY SLOTS

UM2 SPEC

Compatible with	IMR / Li-ion / LiFePO4 / Ni-MH / Ni-Cd
Input	DC 5V/2A 9V/2A 18W (MAX)
Output voltage	4.35V±1% / 4.2V±1% / 3.7V±1% / 1.48V±1%
Output current	QC Mode: 1,500mA*2 (MAX) Standard Mode: 1,000mA*2 (MAX)



UM4



4 BATTERY SLOTS

UM4 SPEC

Compatible with	IMR / Li-ion / LiFePO4 / Ni-MH / Ni-Cd
Input	DC 5V/2A 9V/2A 18W (MAX)
Output voltage	4.35V±1% / 4.2V±1% / 3.7V±1% / 1.48V±1%
Output current	QC Mode: 1,500mA*1 (MAX), 1,500mA*2 (MAX), 750mA*4 (MAX) Standard Mode: 1,500mA*1 (MAX), 1,000mA*2 (MAX), 500mA*4 (MAX)



UM2 & UM4 Compatible with

IMR/Li-ion/LiFePO4: 10440, 14500, 14650, 16500, 16340 (RCR123), 16650, 17350, 17500, 17650, 17670, 17700, 18350, 18490, 18500, 18650, 18700, 20700, 21700, 22500, 22650, 25500, 26500, 26650, 26700
Ni-MH/Ni-Cd: AA, AAA, AAAA, C, D

UMS2



2 BATTERY SLOTS

UMS2 SPEC

Compatible with	IMR / Li-ion / LiFePO4 / Ni-MH / Ni-Cd
Input	DC 5V/2A 9V/2A 18W (MAX)
Output voltage	4.35V±1% / 4.2V±1% / 3.7V±1% / 1.48V±1%
Output current	QC Mode: 3,000mA *1 (MAX), 2,000mA *2 (MAX), Standard Mode: 2,000mA *1 (MAX), 1,000mA *2 (MAX)



UMS4



4 BATTERY SLOTS

UMS4 SPEC

Compatible with	IMR / Li-ion / LiFePO4 / Ni-MH / Ni-Cd
Input	DC 5V/2A 12V/1.5A 18W (MAX)
Output voltage	4.35V±1% / 4.2V±1% / 3.7V±1% / 1.48V±1%
Output current	QC Mode: 3,000mA *1 (MAX), 2,000mA *2 (MAX), 1,000mA *4 (MAX) Standard Mode: 2,000mA *1 (MAX), 1,000mA *2 (MAX), 500mA *4 (MAX)



UMS4 Compatible with

IMR/Li-ion/LiFePO4: 10440, 14500, 14650, 16500, 16340 (RCR123), 16650, 17350, 17500, 17650, 17670, 17700, 18350, 18490, 18500, 18650, 18700, 20700, 21700, 22500, 22650, 25500, 26500, 26650, 26700
Ni-MH/Ni-Cd: AA, AAA, AAAA, C, D



SC4

Four-Slot Superb Charger

4 BATTERY SLOTS

SC4 SPEC	
Compatible with	IMR / Li-ion / LiFePO4 / Ni-MH / Ni-Cd
Input	AC 100-240V 50/60Hz 1A(MAX) 40W DC 12V 3A
Output voltage	Battery: 4.35V±1% / 4.2V±1% / 3.7V±1% / 1.48V±1% USB: 5V±5% 2.1A MAX
Output current	3A*2 (MAX) 1.5A*4

SC4 Compatible with

Li-ion/IMR/LiFePO4: 10440, 10500, 12340, 12500, 12650, 13450, 13500, 13650, 14350, 14430, 14500, 14650, 16500, 16340 (RCR123), 16650, 17350, 17500, 17650, 17670, 18350, 18490, 18500, 18650, 22500, 22650, 25500, 26500, 26650

Ni-MH/Ni-Cd: AA, AAA, AAAA, C, D

NEW i2

Dual-Slot Intellicharger

2 BATTERY SLOTS

NEW i2 SPEC	
Compatible with	IMR / Li-ion / LiFePO4 / Ni-MH / Ni-Cd
Input	AC 100-240V 50/60Hz 0.25A(MAX) 8W DC 9-12V
Output voltage	4.35V±1% / 4.2V±1% / 3.7V±1% / 1.48V±1%
Output current	500mA × 2 / 1,000mA × 1



NEW i4

Four-Slot Intellicharger

4 BATTERY SLOTS

NEW i4 SPEC	
Compatible with	IMR / Li-ion / LiFePO4 / Ni-MH / Ni-Cd
Input	AC 100-240V 50/60Hz 0.25A(MAX) 10W DC 9-12V 1A
Output voltage	4.35V±1% / 4.2V±1% / 3.7V±1% / 1.48V±1%
Output current	1.5A × 1 / 0.75A × 2 / 0.5A × 2 / 0.375A × 4



NEW i2 & NEW i4 Compatible with

Li-ion/IMR/LiFePO4: 10340, 10350, 10440, 10500, 12340, 12500, 12650, 13450, 13500, 13650, 14350, 14430, 14500, 14650, 16500, 16340 (RCR123), 16650, 17350, 17500, 17650, 17670, 18350, 18490, 18500, 18650, 22500, 22650, 25500, 26500, 26650

Flat-topped Batteries: 18700, 20700, 21700

Ni-MH/Ni-Cd: AA, AAA, AAAA, C, D

Ci2

USB-C

2 BATTERY SLOTS

Intelligent USB-C Dual-Slot Superb Charger

Ci2 SPEC	
Compatible with	IMR / Li-ion / Ni-MH / Ni-Cd
Input	5V=2A / 9V=2A / 12V=1.5A 18W(MAX)
Output voltage	4.2V±1% / 1.48V±1%
Output current	Fast Charge Mode: 3,000mA*1 MAX / 1,500mA*2 MAX Standard Mode: 2,000mA*1 MAX / 1,000mA*2 MAX



Ci4

USB-C

4 BATTERY SLOTS

Intelligent USB-C Four-Slot Superb Charger

Ci4 SPEC	
Compatible with	IMR / Li-ion / Ni-MH / Ni-Cd
Input	5V=2A / 9V=2A / 12V=1.5A 18W(MAX)
Output voltage	4.2V±1% / 1.48V±1%
Output current	Fast Charge Mode: 3,000mA*1 MAX / 1,500mA*2 MAX / 1,000mA*3 MAX / 750mA*4 MAX Standard Mode: 2,000mA*1 MAX / 1,000mA*2 MAX / 700mA*3 MAX / 500mA*4 MAX



Ci2 & Ci4 Compatible with

IMR/Li-ion: 10440, 14500, 14650, 16500, 16340 (RCR123), 16650, 17350, 17500, 17650, 17670, 17700, 18350, 18490, 18500, 18650, 18700, 21700, 22500, 22650, 25500, 26500, 26650, 26700

Ni-MH/Ni-Cd: AA, AAA, AAAA, C, D

D2

Dual-Slot Digicharger

2 BATTERY SLOTS

D2 SPEC	
Compatible with	IMR / Li-ion / LiFePO4 / Ni-MH / Ni-Cd
Input	AC 100-240V 50/60Hz 0.25A(MAX) DC 12V 1A
Output voltage	4.2V±1% / 3.7V±1% / 1.48V±1%
Output current	500mA × 2



D4

Four-Slot Digicharger

4 BATTERY SLOTS

D4 SPEC	
Compatible with	IMR / Li-ion / LiFePO4 / Ni-MH / Ni-Cd
Input	AC 100-240V 50/60Hz 0.35A(MAX) DC 12V 1A
Output voltage	4.2V±1% / 3.7V±1% / 1.48V±1%
Output current	375mA × 4 / 750mA × 2

D2 & D4 Compatible with

Li-ion / IMR / LiFePO4: 26650, 22650, 18650, 17670, 18490, 18350, 17500, 14500, 16340 (RCR123), 10440

Ni-MH/Ni-Cd: AA, AAA, AAAA, C

Mosquito Protection



EMR Series

With the innovative heating system and safe activating method, the NITECORE EMR Series is specially designed for outdoor enthusiasts to repel mosquitoes or pests effectively. The EMR Series products are powered by the rechargeable Li-ion battery, minimizing the carbon footprint while providing users with a long-lasting protection zone.



EMR Series



Electronic Repeller

Can be recharged at any time for long-term use while it is safe, green, and efficient



Conventional Repeller



Fuel Powered

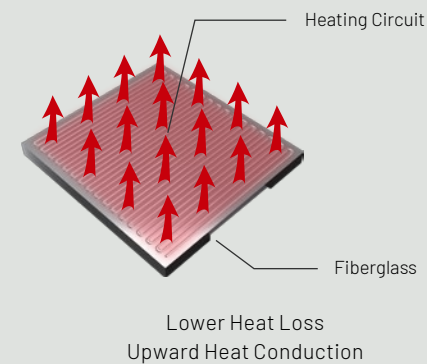
There is a need to carry and replace fuel, which is high consumption, not eco-friendly, and unapproved by airlines.



FCB 3.0 Heating System

(Utility Model Patent No. ZL2022225158067)

Peak Heating Area Temperature:
Approx. 180°C / 356°F

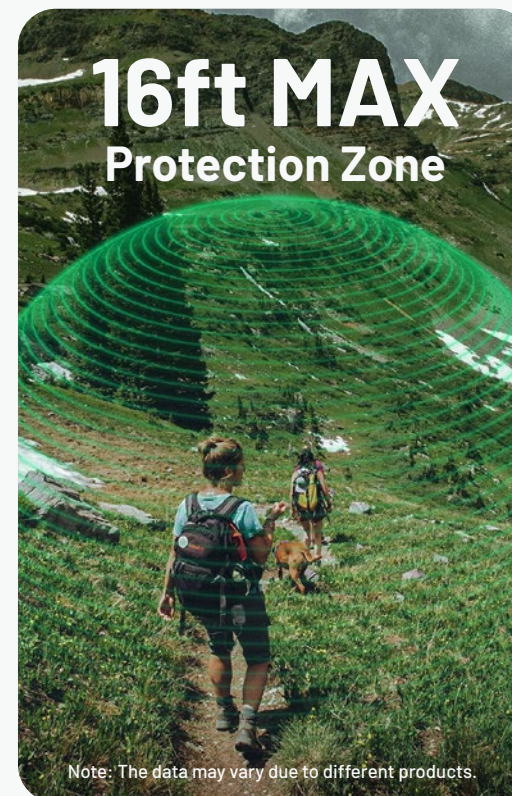


Ultrasonic Function



Ideal for repelling pests, such mice, snakes, cockroaches, and skunks.

16ft MAX Protection Zone



Note: The data may vary due to different products.

Professional Outdoor Mosquito Repellent Mat

NITECORE

NITECORE

NITECORE

Effective & Fast-Acting

Each Lasting 6 Hours

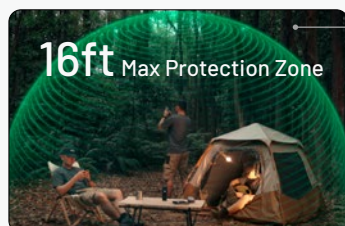
EMR25

Multipurpose Portable Electronic Repeller

Dimensions: 165.4mm × 56.2mm × 41.9mm (6.51" × 2.21" × 1.65")

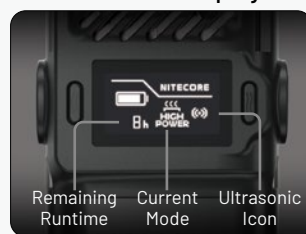
Weight: 295g±5g (10.41 oz±0.1 oz)

Features



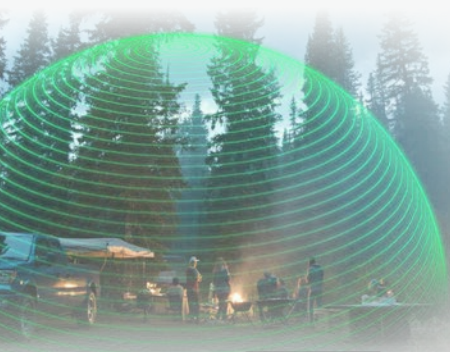
40kHz
Ultrasonic Function

OLED
Real-time Display



Professional Outdoor Mosquito Repellent Mat

Effective Fast-Acting



6 Hours



MRM10

30 pcs / box



MRM10 mini

60 pcs / 30 pcs per box



EMR06 TAC

EMR15

EMR16

Electronic Mosquito Repeller	✓	✓	✓
Max Protection Zone	16ft	16ft	16ft
Ultrasonic Function	✗	✗	✗
Battery Capacity	1,800mAh	✗	5,200mAh
Max Runtime	3.5h	✗	5h
Power Supply	✗	✗	✗
OLED Display	✗	✗	✗
Weight	98g (3.46 oz)	62g (2.19 oz)	180g (6.35 oz)



EMR23

EMR25

EMR30 SE

EMR40

Electronic Mosquito Repeller	✓	✓	✓	✓
Max Protection Zone	16ft	16ft	16ft	16ft
Ultrasonic Function	✗	✓	✗	✗
Battery Capacity	8,000mAh	12,000mAh	✗	7,800mAh
Max Runtime	8h	12h	✗	10h
Power Supply	✓	✓	✗	✗
OLED Display	✓	✓	✗	✗
Weight	247g (8.71 oz)	295g (10.41 oz)	86g (3.03 oz)	229g (8.08 oz)

NEF Series

NEW NEF01

Mini High-Speed Handheld Fan

Dimensions: 110.0mm × 50.8mm × 31.0mm
(4.33" × 2.00" × 1.22")

Weight: 166g / 5.86 oz

NEF01 SPEC	
Capacity	4,000mAh
Input	5V=2A
Rated Power	7W (MAX)
Rotational Speed	36,000 RPM (MAX)
Wind Speed	11m/s (25 mph) (MAX)

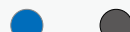


Cobalt Blue



Metallic Gray

2 Colors Available



NEF03 Pro

Foldable Handheld Fan

Dimensions: 192.0mm × 90.0mm × 40.0mm
(7.56" × 3.54" × 1.57")

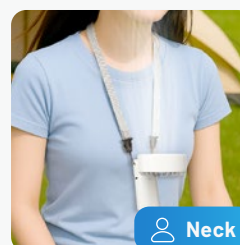
Weight: 222g / 7.83 oz

NEF03 Pro SPEC	
Capacity	4,000mAh
Input	5V=2A
Rated Power	5W (MAX)
Rotational Speed	5,000 RPM (MAX)
Wind Speed	5.8m/s (13 mph) (MAX)

- + 13h Max Runtime
- + LED Real-time Display



2 Colors Available



NEF10

Multifunctional Electric Fan

Dimensions: 194mm × 175mm × 345mm
(7.6" × 6.9" × 13.6")

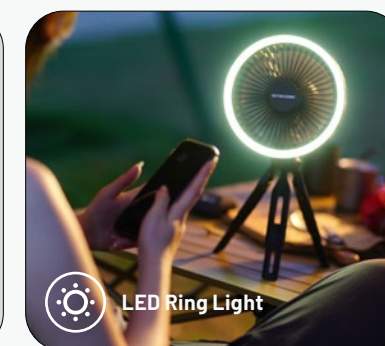
Height: 345mm / 13.6" (MAX)
275mm / 10.8" (MIN)

Weight: 655g (±5g) / 23.10 oz (±0.18 oz)

NEF10 SPEC	
Capacity	10,000mAh
Rated Input	5V=2A
Input Power	5V=2A
Rated Power	4W (MAX)
Output Power	5V=2A



2 Colors Available



NEF20

Portable Bladeless Neck Fan

Dimensions: 219.7mm × 202.7mm × 63mm
(8.65" × 7.98" × 2.48")

Weight: 304g ± 5g / 10.72 oz ± 0.1 oz

- + 360° Air Supply Angle
- + 170 L/min Max Airflow Rate

NEF20 SPEC	
Capacity	4,000mAh
Rated Input	5V=2A
Rated Power	4W MAX
Rotational Speed	3,900 RPM



izzCool® Series

Handheld Air Conditioner Fan

-16°C

Portable Air Conditioner Fan

Feel the Cool
in Your Hand

NEW



NEW

2 Colors Available

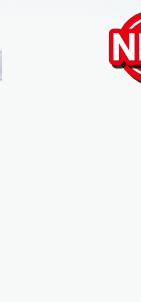
- Matte White
- Mint Green

2 Colors Available

- Pearl White
- Mint Green

	izzCool® 20				izzCool® 20 Pro	
Capacity	2,000mAh				5,000mAh	
Rated Input	5V-2A				5V-2A / 9V-2A / 12V-1.5A (18W MAX)	
Rated Power	7W (MAX)				7W (MAX)	
Charging Time	1.5h (5V/2A Adapter)				1h 50min (12V/1.5A Adapter)	
Moisture Output	72 mL/h				72 mL/h	
Rotational Speed	13,000 RPM (MAX)				13,000 RPM (MAX)	
Wind Speed	8.6m/s (19 mph) (MAX)				8.6m/s (19 mph) (MAX)	
Runtime of Cool Mist Mode	Level 4 (MAX) 1.2h	Level 3 2h	Level 2 5.5h	Level 1 (MIN) 9.5h	Level 100 (MAX) 2.6h	Level 1 (MIN) 44h
Dimensions	158.7mm × 62.0mm × 54.3mm / 6.25" × 2.44" × 2.14"				158.7mm × 62.0mm × 54.3mm / 6.25" × 2.44" × 2.14"	
Weight	162g / 5.71 oz (Accessory Not Included)				189g / 6.67 oz (Accessory Not Included)	
Accessories	Lanyard				Lanyard	

NEW



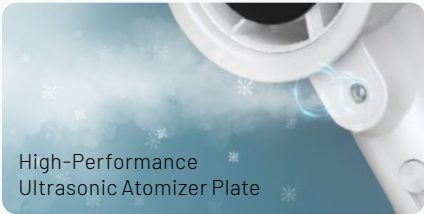
2 Colors Available

- Cloud White
- Glacier Blue

	izzCool® 30					izzCool® 40				
Capacity	3,500mAh					5,200mAh				
Rated Input	5V-2A					18W (MAX)				
Rated Power	5W (MAX)					5W				
Charging Time	2h 30min (5V/2A Adapter)					2h (18W Fast Charging)				
Moisture Output	50 mL/h					50 mL/h				
Rotational Speed	5,000 RPM (MAX)					36,000 RPM (MAX)				
Wind Speed	5.8m/s (13 mph) (MAX)					9.8m/s (22 mph) (MAX)				
Runtime of Cool Mist Mode	Level 5 (MAX) 2h	Level 4 3h	Level 3 5h	Level 2 7h	Level 1 (MIN) 10h	Level 5 (MAX) 3.5h	Level 4 4.5h	Level 3 5.5h	Level 2 7h	Level 1 (MIN) 14h
Dimensions	207.0mm × 90.0mm × 40.0mm / 8.15" × 3.54" × 1.57" (Accessory Not Included)					146.7mm × 67.9mm × 47.3mm / 5.78" × 2.67" × 1.86" (Accessory Not Included)				
Weight	232g / 8.18 oz (Accessory Not Included)					240g / 8.47 oz (Accessory Not Included)				



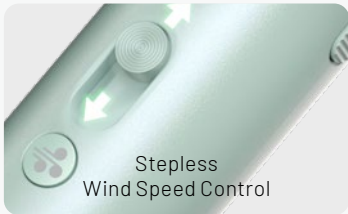
Industry's First
Ring-Shaped
Water Tank Design



High-Performance
Ultrasonic Atomizer Plate



44 Hours Max Runtime
Enjoy Long-Lasting Cooling



Stepless
Wind Speed Control



LED Real-Time Display



CW Series



red dot

CineWind®



CW30 Wireless Remote Control

Portable Remote-Controlled Photography Fan



50 km/h (31.1 mph)
Max Wind Speed



Wireless Remote Control



NP-F Batteries



USB-C Port

Dual Power Options



10-Level Control Knob

Multiple
Mounting Interfaces

Detachable Fan Covers
for Easy Cleaning



NIA009
Portable Concentrator



Headlamp

Flashlight

Power Solution

Mosquito Protection

Fan

Explore More

Air Pump

NEW AP05C

Ultra Lightweight Carbon Fiber Air Pump

AP05C SPEC	
Inflation / Deflation Pressure	±2.7 kPa
Airflow Rate	200 L/min
Runtime	45min
Dimensions	77.2mm × Φ26.0mm / 3.04" × Φ1.02" (Accessories Not Included)
Weight	23g±1g / 0.81 oz±0.04 oz (Accessories and Battery Not Included)
Accessories Included	Storage Bag, Nozzle × 4, Adapter



Gadget



Bite Healer 10

For instant relief from mosquito bite itching

- Tiny and Portable
- Chemical Free
- Approx. **100** Applications per Full Charge

Fast Itch Relief
3s (MIN)

Long-lasting Itch Relief
6s (MAX)

NLink10

USB-C Magnetic Fast Charging Cable



- Magnetic Storage
- 60W Fast Charging
- Lightweight & Skin-Friendly



Flexible USB Stand

USB-C to USB-C



Flexible USB Stand

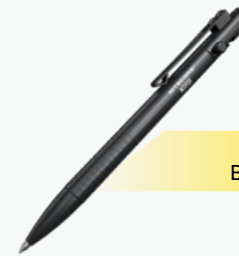
USB-A to USB-C



UAC20

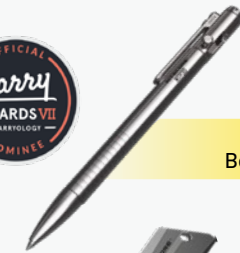
Nylon Braided USB-C Charging Cable

Titanium / Aluminum Collection



▶ **NTP31**

Aluminum Alloy
Bolt Action Tactical Pen



▶ **NTP30**

Titanium Alloy
Bolt Action Tactical Pen



▶ **Halo 10**

Titanium Curve Measure Ring



▶ **NTK09**

Titanium Utility EDC Knife



▶ **NSH10**

Titanium Alloy Multiuse Snap Hook



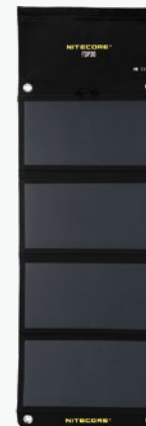
▶ **NTK05**

Titanium Alloy Keychain Knife



▶ **NWS10**

Emergency Whistle



FSP30

Unfolded Dimensions	295mm × 880mm × 4mm (11.61" × 34.65" × 0.16")
Folded Dimensions	295mm × 170mm × 45mm (11.61" × 6.69" × 1.77")
Weight	625g±5g (1.38 lbs±0.01 lbs)
Panel Number	4
Cell Efficiency	24%
Total Output Power	30W (MAX)
Output Port	USB-A × 2, USB-C
USB-A Output	Total 5V=3.1A
USB-C Output	5V=3A / 9V=2A



Extension Cable for Solar Panels
10m (33ft)



Parallel Cable for Solar Panels
5m (16ft)



► Gun Mounts



	GM02 Pro	GM02MH	GM05
Type	Picatinny Rail Mount	Magnetic Mount	Generic Scope Mount
Compatible Tube Diameter	1" (25.4mm-26.5mm)	1" (25.4mm)	1"-1.2" (25.4mm-30mm)

► Tactical Remote Switch



RSW1 Pro
Compatible Models:
MH12 Pro, MH25 Pro,
MH40 Pro



NTC2i
Type: 21700 U-shaped Tailcap Switch
Button: Power Button + Mode Button
Compatible Model: P10i, P30i, P10iX,
P20iX, and more

► Interchangeable Tail Cap

► Tactical Holsters



	NTH10	NTH20	NTH25	NCP30
Type	Quick Draw Tactical Holster	Quick Draw Tactical Holster	Quick Draw Tactical Holster	Durable Multifunctional Tactical Holster
Compatible Model	P10i, P10iX	P20iX, P20i UV	P23i, P20iX, P20i UV	P20iX, P20i UV, P23i



Bike Mount

BM06



Helmet Clip

NHC10



Shoulder Clip

NSC10



Window Breaker

NWB10



Silicone Grease

SG7



Tactical Lanyard

NTL10



Tactical Lanyard

NTL20

► Filters



Utilized a toughened ultra-clear glass lens with anti-reflective coating that provides impact resistance and maximum light penetrability. Flashlights equipped with the red/green/blue filters to deliver soft red/red/green/blue light, suitable for short range reading.

Model	Compatible Size	Color
NFR20 / NFG20	19.7mm	RGB
NFR23 / NFG23 / NFB23	22.5mm	RGB
NFR25 / NFG25 / NFB25	25.4mm	RGB
NFR26 / NFG26 / NFB26	26.8mm	RGB
NFR32	32mm	R
NFR34 / NFG34 / NFB34	34mm	RGB
NFR40 / NFG40 / NFB40	40mm	RGB
NFR50 / NFG50	50mm	RG
NFR60 / NFG60 / NFB60	60mm	RGB
NFR65 / NFG65	65mm	RG
NFR70 / NFG70	70mm	RG
NFD23	22.5mm	White
NFD25	25.4mm	White
NFD34	34mm	White
NFD40	40mm	White
NFD60	60mm	White

► Traffic Wands

Made from PC material that features crush, wear and high temperature resistance, traffic wand can turn flashlights into an orange traffic wand for traffic control, road guide and distress signal.



Model	Compatible Size
NTW20	19.7mm
NTW25	25.4mm
NTW26	26.8mm
NTW32	32mm
NTW34	34mm
NTW40	40mm

Photography Accessories



BB2

Electronic Photography Blower

- Max Wind Speed of 80 km/h (49.7 mph)
- Magnetic Quick Release Brush
- 2.7 kPa Dust Removal Wind Pressure
- Lighting Function
- Mode Dial
- 33.6W High Power Motor
- 7.2Wh Li-ion Battery
- High Density Filter
- SILENT SILENT Mode
- USB-C Rechargeable

BB2 SPEC

Input	5V=2A
Rated Power	33.6W
Battery Capacity	7.2Wh
Rotational Speed	30,000 RPM
Wind Speed	TURBO: 80 km/h (49.7 mph)
	OPTICAL: 55 km/h (34.2 mph)
	SILENT: 30 km/h (18.6 mph)



NIA002

Camera Body Cleaning Brush

Compatible with: BB2, BB21, BB Mini



NIA003

Lens Cleaning Brush

Compatible with: BB2, BB21, BB Mini



- Ultra Soft
- Safe for Lens Coatings

NIA004

Multipurpose Cleaning Kit

Best Cleaning Partners

Compatible with: BB2, BB21



Extended Dusting Brush



Crevice Nozzle



Extended Nozzle With Brush





BB21

Electronic Photography Blower

- Max Wind Speed of 80 km/h (49.7 mph)
- 7.2Wh Li-ion Battery
- Durable PC Material
- Mode Indicators & Power Indicators
- Lockout Function
- Magnetic Quick Release Brush
- High Density Filter
- USB-C Rechargeable



BB21 SPEC

Input	5V=2A
Rated Power	33.6W
Battery Capacity	7.2Wh
Rotational Speed	30,000 RPM
Wind Speed	TURBO: 80 km/h (49.7 mph)
	OPTICAL: 55 km/h (34.2 mph)
	SILENT: 30 km/h (18.6 mph)

HOT SALE

BB nano

Portable Versatile Electronic Blower

- Max Wind Speed of 40 km/h (24.9 mph)
- 2.6 kPa Dust Removal Wind Pressure
- 4.8Wh Li-ion Battery
- High Density Filter
- Silicone Nozzle Design
- USB-C Rechargeable



NIA006
High Density Filter



NIA007
Vacuum Attachment Kit



NIA008
Enhanced Cleaning Kit

BB nano SPEC

Input	5V=2A
Rated Power	30W
Battery Capacity	4.8Wh
Rotational Speed	40,000 RPM
Wind Speed	HIGH: 40 km/h (24.9 mph)
	LOW: 15 km/h (9.3 mph)

Sensor Cleaning Swab Series



reddot winner 2022



Mini Swabs

For Mirrorless Cameras

NC-CK12S

M4/3

NC-CK34S

Medium Format

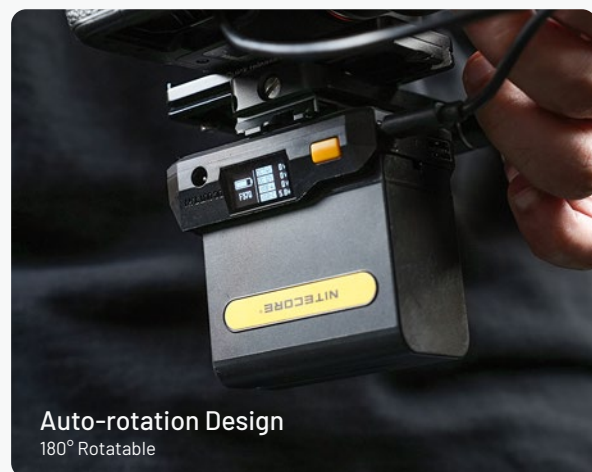
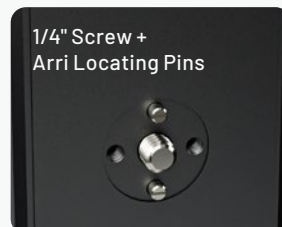
NEW BAP10

NP-F Battery Adapter Plate

83g / 2.93 oz



Features



Camera Batteries and Chargers



	UFZ100	NP-F970	NP-F750
Compatible Brand	SONY	SONY	SONY
Voltage	7.2V	7.2V	7.4V
Capacity	2,250mAh	7,800mAh	5,200mAh
Energy	16.2Wh	56.16Wh	38.5Wh



USN3 PRO

USN4 PRO

Type	Dual Slot USB-C QC Charger for SONY	Dual Slot USB-C QC Charger for SONY
Battery Slot	2	2
Charging Port	USB-C	USB-C
Input	DC 5V/2A or 9V/2A	DC 5V/2A or 9V/2A
Output Voltage	Slot 1 8.4V±1% Slot 2 8.4V±1%	Slot 1 8.4V±1% Slot 2 8.4V±1%
Output Current	QC Mode: 1,200mA*1(MAX), 800mA*2(MAX) Standard Mode: 1,000mA*1(MAX)	QC Mode: 1,200mA*1(MAX), 800mA*2(MAX) Standard Mode: 1,000mA*1(MAX)
Compatible With	NP-FM500H / NP-F730 / NP-F750 / NP-F770 / NP-F970 / NP-F550	NP-FZ100



USN1

UCN2 PRO

Type	USB Dual Slot Travel Charger for SONY Camera	Dual Slot USB QC Charger for CANON
Battery Slot	2	2
Charging Port	Micro USB	Micro USB
Input	DC 5V/2A	DC 5V/2A or 9V/2A
Output Voltage	Slot 1 8.4V±1% Slot 2 8.4V±1%	Slot 1 8.4V±1% Slot 2 8.4V±1%
Output Current	1,000mA (MAX)	QC Mode: 1,200mA*1(MAX), 800mA*2(MAX) Standard Mode: 1,000mA*1(MAX)
Compatible With	NP-FW50	LP-E6N, LP-E6P



FX3

FX1

Type	Dual Slot USB QC Charger for FUJIFILM	Dual Slot USB Charger for FUJIFILM
Battery Slot	2	2
Charging Port	USB-C	Micro USB
Input	DC 5V/2A or 9V/2A	DC 5V/2A
Output Voltage	Slot 1 8.4V±1% Slot 2 8.4V±1%	Slot 1 8.4V±1% Slot 2 8.4V±1%
Output Current	QC Mode: 1,500mA*1(MAX), 1,000mA*2(MAX) Standard Mode: 1,000mA*1(MAX), 500mA*2(MAX)	1,000mA (MAX)
Compatible With	NP-W235	NP-W126 / NP-W126S



UNK2

ULSL

Type	Dual Slot USB Charger for NIKON	USB Travel Charger for LEICA Camera
Battery Slot	2	1
Charging Port	Micro USB	Micro USB
Input	DC 5V/2A	DC 5V/2A
Output Voltage	Slot 1 8.4V±1% Slot 2 8.4V±1%	Slot 8.4V±1%
Output Current	1,000mA (MAX)	1,000mA (MAX)
Compatible With	EN-EL15 / EN-EL15a / EN-EL15b	BP-SCL4

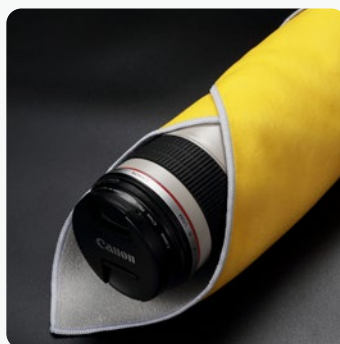


Stick-it Wrapper

Model: NC-ACC002



- Multifunctional Organizations
- Dust and Moisture Proof
- Scratch Resistant
- Environmentally Friendly



TIPA World Awards 2021
Best Power Accessory

SCL10 2-in-1 Smart Camera Light & Power Bank

SCL10 SPEC

Color Temperature	2,500K-6,300K
Max Brightness Output	800 Lumens
Capacity	10,000mAh 3.85V (38.5Wh)
Input	USB-C: 5V=2.4A / 9V=2A 18W (MAX)
Output	USB-C: 5V=2.4A / 9V=2A / 12V=1.5A USB-A: 5V=2.4A / 9V=2A / 12V=1.5A 18W (MAX) Dual Ports: 5V=2.4A (MAX)



2,500K



4,400K



6,300K



LHH82

Lens Heater



LHH82 SPEC

Input	5V=2A (MAX)
Input Port	USB-C
Operating Temperature	-40°C~40°C (-40°F~104°F)
Heating Temperature	45±5°C (113±9°F)
Compatible with	A filter size of 72-82mm

► BP Series

BP23 Pro

Multipurpose Commuting Backpack

Capacity: 23L / 1,404 cu in

Dimensions: 47cm × 29cm × 15cm / 18.5" × 11.4" × 5.9"

Weight: 1,260g / 2.8 lbs

Features

23L (1,404 cu in) Large Capacity
With 4 Compartments

Top Compartment

Loop Surface

Main Compartment

Front Compartment

Outer Compartment

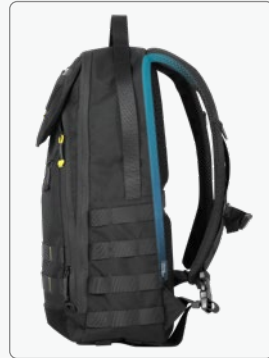
MOLLE System



500D CORDURA® Nylon Fabric



3D Carrying System



Internal Fiberglass Stay

BP23

Multipurpose Commuting Backpack

Weight: 1,030g / 2.3 lbs

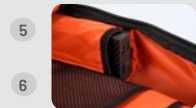
Wearproof 600D Polyester Fabric



High-visibility Orange Interior Lining
Multifunctional Main Compartment



1 Laptop Compartment



5 Dual Internal Side Pockets



7 Mesh Zippered Pocket in the Front

► SLB Series



SLB01

Outdoor Sling Bag

Capacity: 1L / 61 cu in

Dimensions: 23.5cm × 17cm / 9.3" × 6.7"

Weight: 150g / 0.3 lbs

SLB03

SLING BAG

Capacity: 1.6L (98 cu in)

Dimensions: 26cm × 12.5cm × 5cm /
10.2" × 4.9" × 2.0"

Weight: 220g / 0.5 lbs



High Strength 500D
Nylon Fabric

Wearproof

Ultra Lightweight

Water and Dirt Resistant

Multiple Carry Modes



Sling Bag



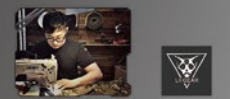
Crossbody Bag



Waist Pack



NITECORE × Lii Gear



Designed in Collaboration
with Lii Gear

SLB05

Modular Commuting Sling Bag

Capacity: 2L / 122 cu in

Dimensions: 22cm × 5cm × 16cm / 8.7" × 2.0" × 6.3"

Weight: 275g / 0.6 lbs

The flap and the frontal pockets designed with 600D Nylon fabric with water resistant coating

500D high quality Nylon material with excellent resistance to fouling, wear, and splashes

Premium Material



Two-way YKK Zippers



UTX Duraflex Buckles



Cushion Foam Available in the sides, bottom, and back for shock resistance and impact resistance

Sling Bag



Handbag



Utility Pouch



Multiple Carrying Options



2 × MOLLE System Clips Included For attaching to other backpacks



Designed in Collaboration with OVERCLOCK ROAM



SLB06

Commuting Crossbody Bag

Capacity: 7L / 427 cu in

Dimensions: 35cm × 20cm × 8cm / 13.8" × 7.9" × 3.1"

Weight: 630g / 1.4 lbs



SLB08

NEW

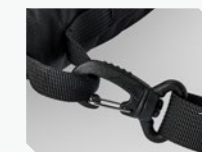
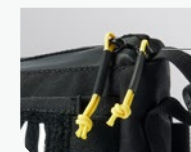
Modular Commuting Sling Bag

Capacity: 2L / 122 cu in

Dimensions: 27cm × 4cm × 16cm / 10.6" × 1.6" × 6.3"

Weight: Approx. 125g / 0.3 lbs

Two-Way YKK Zippers



UTX Durable Buckles



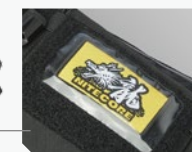
Quick-Adjust Shoulder Strap



NITECORE × Lii Gear



Designed in Collaboration with Lii Gear



Two Compartments with See-Through Design



Crossbody Bag



Sling Bag



Waist Bag



Utility Pouch



Extra Bag

► NPP Series



NPP02

Waterproof Crossbody Bag



NPP01 mini

Outdoor Sacoche Bag

► NUP Series



NUP30

Multi-Purpose Utility Pouch

	MODEL	LED	OUTPUT / RUNTIME					BEAM DISTANCE	PEAK BEAM INTENSITY
			TURBO	HIGH	MID	LOW	ULTRALOW		
NU Series	NU05 V2	4 x High Performance LEDs	Red Indicator (Slow Flashing)	Red Light (Slow Flashing)	Red Light (Quick Flashing)	White Light (Slow Flashing)	White Light (Constant-on)	—	—
			—	4 Lumens	4 Lumens	40 Lumens	40 Lumens		
			47h	10h	10h	4h	1h45min		
	NU06 MI	4 x High Performance LEDs	IR Constant-on	Red Constant-on	Green Constant-on	Blue Constant-on	—	—	—
			—	3 Lumens	8 Lumens	2 Lumens	—		
			4h	9h	9h	5h	—		
			IR Flashing	Red Flashing	Green Flashing	Blue Flashing	Red/Blue Police Warning Flashing		
			—	3 Lumens	8 Lumens	2 Lumens	—		
			50h	75h	75h	48h	56h		
	NU06 LE	4 x High Performance LEDs	Red Constant-on	Green Constant-on	Blue Constant-on	White Constant-on	—	—	—
			3 Lumens	8 Lumens	2 Lumens	15 Lumens	—		
			9h	9h	5h	5h45min	—		
			Red Flashing	Green Flashing	Blue Flashing	White Flashing	Red/Blue Police Warning Flashing		
			3 Lumens	8 Lumens	2 Lumens	15 Lumens	—		
			75h	75h	48h	54h	56h		
	NU07 LE	5 x High Performance LEDs	Red Constant-on	Green Constant-on	Yellow Constant-on	White Constant-on	Blue Constant-on	—	—
			3 Lumens	8 Lumens	9 Lumens	15 Lumens	2 Lumens		
			10h	11h	11h	7h	6h		
			Red Flashing	Green Flashing	Yellow Flashing	White Flashing	Blue Flashing	Red/Blue Police Warning Flashing	
			3 Lumens	8 Lumens	9 Lumens	15 Lumens	2 Lumens	—	
			50h	50h	50h	40h	40h	40h	
	NU11	—	—	White Light		—	—	50m	596cd
			—	150 Lumens	45 Lumens	—	—		
			—	2h30min	6h	—	—		
	NU20 Classic	—	Primary White Light				Auxiliary White Light	109m	2963cd
			360 Lumens	200 Lumens	38 Lumens	1 Lumens	20 Lumens		
			2h	5h	7h	97h	7h		
	NU21	—	White Light				58m	840cd	
			—	360 Lumens	170 Lumens	60 Lumens	6 Lumens		
			—	2h	3h30min	8h	37h		
	NU25 MCT/NU25 MCT UL	MCT UHE LEDs	Primary Light (Neutral White Light / Warm Light / Cool White Light)				132m	4351cd	
			—	400 Lumens	200 Lumens	60 Lumens	6 Lumens		
			—	2h40min	5h	13h	45h		
	NU27	MCT UHE LEDs	600 Lumens	400 Lumens	200 Lumens	70 Lumens	6 Lumens	123m	3705cd
			—	3h	6h30min	13h	57h		
	NU30	—	Primary White Light			Auxiliary White Light		130m	4062cd
			HIGH	MID	LOW	FLOOD LOW	ULTRALOW		
			500 Lumens	200 Lumens	100 Lumens	50 Lumens	6 Lumens		
			4h	8h	24h	32h	97h		
	NU31	—	550 Lumens	200 Lumens	60 Lumens	50 Lumens	6 Lumens	145m	5800cd
			5h	8h	38h	42h	147h		
	NU33	—	700 Lumens	200 Lumens	60 Lumens	50 Lumen	6 Lumens	135m	4578cd
			4h	9h	38h	47h	147h		

NOTE: Runtime has been measured with the first battery type stated in battery options.

* The runtime for Turbo/High mode is the testing result before starting temperature regulation.

WATERPROOF	BATTERY OPTIONS	DIMENSIONS			WEIGHT	MODEL
		LENGTH	HEAD DIAMETER	TAIL DIAMETER		
IP66	Built-in rechargeable Li-ion battery	29.75mm x 29.5mm x 16.42mm (1.17" x 1.16" x 0.65")			11.1g (0.39oz)	NU05 V2
IP66	Built-in rechargeable Li-ion battery	29.5mm x 29.5mm x 25.4mm (1.16" x 1.16" x 1.00")			16.7g (0.59oz)	NU06 MI
IP66	Built-in rechargeable Li-ion battery	29.5mm x 29.5mm x 25.4mm (1.16" x 1.16" x 1.00")			15.8g (0.56oz)	NU06 LE
IP66	Built-in rechargeable Li-ion battery	61.8mm x 28.9mm x 21.7mm (2.43" x 1.14" x 0.85")			24.5g (0.86oz)	NU07 LE
IPX5	Built-in rechargeable Li-ion battery	50.2mm x 59.1mm x 18.7mm (1.98" x 2.33" x 0.74")			41g (1.45oz)	NU11
IP66	Built-in rechargeable Li-ion battery	52.1mm x 33.1mm x 24.4mm (2.05" x 1.30" x 0.96")			38g (1.34 oz)	NU20 Classic
IP66	Built-in rechargeable Li-ion battery	60.1mm x 33.0mm x 25.5mm (2.37" x 1.30" x 1.00")			44g (1.55 oz)	NU21
IP66	Built-in rechargeable Li-ion battery	NU25 MCT: 60mm x 34.4mm x 27.2mm (2.36" x 1.35" x 1.07") NU25 MCT UL: 60mm x 33mm x 25.7mm (2.36" x 1.30" x 1.01")			NU25 MCT: 50g (1.76oz) NU25 MCT UL: 47g (1.66oz)	NU25 MCT/NU25 MCT UL
IP66	Built-in rechargeable Li-ion battery	65.5mm x 33.9mm x 25.5mm (2.58" x 1.33" x 1.00")			56g (1.98 oz)	NU27
IP66	Built-in rechargeable Li-ion battery	62.3mm x 45.2mm x 31mm (2.45" x 1.78" x 1.22")			90g (3.17 oz)	NU30
IP66	Built-in rechargeable Li-ion battery	62.3mm x 46mm x 35.6mm (2.45" x 1.81" x 1.40")			95.5g (3.37oz)	NU31
IP66	Built-in rechargeable Li-ion battery	62.3mm x 46mm x 35.6mm (2.45" x 1.81" x 1.40")			95.5g (3.37oz)	NU33

Model		LED	Output / Runtime					Beam Distance	Peak Beam Intensity
			Turbo	High	Mid	Low	UltraLow		
NU Series	NU40	–	1000 Lumens	600 Lumens	300 Lumens	100 Lumens	8 Lumens	100m	2700cd
			–	6h	10h	22h	120h		
	NU43	–	1400 Lumens	600 Lumens	300 Lumens	100 Lumens	8 Lumens	130m	3800cd
			–	10h	15h	29h	165h		
	NU45	–	Primary White Light					172m	7426cd
			1700 Lumens	1000 Lumens	300 Lumens	100 Lumens	–		
			–	8h	17h	34h	–		
			Auxiliary White Light						
			–	–	–	25 Lumens	8 Lumens		
			–	–	–	55h	86h		
	NU50	–	1400 Lumens	600 Lumens	300 Lumens	100 Lumens	8 Lumens	130m	3800cd
			–	13h	20h	38h	200h		
	NU53	–	Primary White Light					175m	6841cd
			1800 Lumens	1300 Lumens	400 Lumens	150 Lumens	–		
			–	9h	18h	37h	–		
			Auxiliary White Light						
			–	–	–	25 Lumens	8 Lumens		
			–	–	–	66h	153h		
UT Series	UT27	MCT UHE LEDs	Primary Light (Neutral White Light)	Primary Light (Cool White Light / Neutral White Light / Warm Light)				168m	7124cd
			800 Lumens	500 Lumens	280 Lumens	100 Lumens	–		
			2h30min	3h30min	6h30min	14h30min	–		
			Primary Light (Neutral White Light)	Primary Light (Cool White Light / Neutral White Light / Warm Light)					
			800 Lumens	500 Lumens	280 Lumens	100 Lumens	–		
			2h	2h30min	3h	8h30min	–		
	UT2000	MCT UHE LEDs	2000 Lumens	1000 Lumens	350 Lumens	180 Lumens	20 Lumens	220m	12126cd
			7h	15h	26h	55h	30min		
Headlamp Series	HA11	UHE LED	–	240 Lumens	–	60 Lumens	6 Lumens	90m	2030cd
			–	4h	–	11h	75h		
			–	240 Lumens	–	60 Lumens	6 Lumens		
			–	7h	–	18h	126h		
	HA13	–	–	350 Lumens	–	100 Lumens	6 Lumens	120m	3500cd
			–	3h	–	12h	140h		
			–	350 Lumens	–	100 Lumens	6 Lumens		
			–	4h30min	–	15h	160h		
	HA15 UHE	UHE LED	–	–	200 Lumens	100 Lumens	6 Lumens	80m	1931cd
			–	–	4h	9h	82h		
			–	400 Lumens	200 Lumens	100 Lumens	6 Lumens		
			–	3h30min	5h	10h30min	114h		
	HA23 UHE	MCT UHE LEDs	–	600 Lumens	280 Lumens	100 Lumens	6 Lumens	132m	4364cd
			–	3h	4h30min	12h	125h		
–			600 Lumens	280 Lumens	100 Lumens	6 Lumens			
–			1h30min	2h30min	8h	97h			

NOTE: Runtime has been measured with the first battery type stated in battery options.
* The runtime for Turbo/High mode is the testing result before starting temperature regulation.

WATERPROOF	BATTERY OPTIONS	DIMENSIONS			WEIGHT	MODEL
		LENGTH	HEAD DIAMETER	TAIL DIAMETER		
IP68	Built-in rechargeable Li-ion battery	79.8mm x 46.1mm x 43.9mm (3.14" x 1.81" x 1.73")			116g (4.09oz)	NU40
IP68	Built-in rechargeable Li-ion battery	79.8mm x 46.1mm x 43.9mm (3.14" x 1.81" x 1.73")			116g (4.09oz)	NU43
IP68	Built-in rechargeable Li-ion battery	79mm x 39.5mm x 49.8mm (3.11" x 1.56" x 1.96")			126g (4.44 oz)	NU45
IP68	Built-in rechargeable Li-ion battery	83.4mm x 48.5mm x 43.9mm (3.28" x 1.91" x 1.73")			146g (5.15oz)	NU50
IP68	Built-in rechargeable Li-ion battery	83.4mm x 48.5mm x 43.9mm (3.28" x 1.91" x 1.73")			151g (5.33 oz)	NU53
IP66	1xHLB1500	56mm x 46.6mm x 32mm (2.20" x 1.83" x 1.26")			74g (2.61oz)	UT27
	3xAAA					
IP68	1xCarbon Battery™ 12K	85mm x 40mm x 25mm (3.35" x 1.57" x 0.98")			122g (4.30 oz)	UT2000
IP66	1xAA	61.5mm x 36.2mm x 28.9mm (2.42" x 1.43" x 1.14")			38g (1.34oz)	HA11
	1xNL1411R					
IPX6	3xAAA	59mm x 50mm x 36mm (2.32" x 1.97" x 1.42")			67g (2.36oz)	HA13
	1xHLB1300					
IP66	1xAA	67.4mm x28.6mm x 33.4mm (2.65" x 1.13" x 1.31")			43g (1.52 oz)	HA15 UHE
	1xNL1411R					
IP68	1xHLB1500	60.2mm x 46.7mm x 34.2mm (2.37" x 1.84" x 1.35")			56g (1.98 oz)	HA23 UHE
	3xAAA					

Model	LED	Output / Runtime					Beam Distance	Peak Beam Intensity	
		Turbo	High	Mid	Low	UltraLow			
Headlamp Series	HA25 UHE	MCT UHE LEDs	Primary Light (Neutral White Light / Warm Light / Cool White Light)					120m	3611cd
			800 Lumens	450 Lumens	280 Lumens	100 Lumens	6 Lumens		
			2h30min	3h45min	6h	13h	88h		
			Primary Light (Neutral White Light / Warm Light / Cool White Light)						
			—	450 Lumens	280 Lumens	100 Lumens	6 Lumens		
			—	3h30min	4h15min	8h30min	75h30min		
	HA27 UHE	MCT UHE LEDs	Primary Light (Neutral White Light / Warm Light / Cool White Light)					150m	5632cd
			800 Lumens	500 Lumens	280 Lumens	100 Lumens	8 Lumens		
			2h	3h30min	7h	15h	65h		
			Primary Light (Neutral White Light / Warm Light / Cool White Light)						
			—	500 Lumens	280 Lumens	100 Lumens	8 Lumens		
			—	2h30min	3h	9h	52h		
	HC33	CREE XHP35 HD	1800 Lumens	780 Lumens	240 Lumens	70 Lumens	1 Lumen	187m	8750cd
			*30min	*1h45min	5h45min	16h30min	330h		
	HC35	4 x CREE XP-G3 S3	2700 Lumens	800 Lumens	270 Lumens	40 Lumens	1 Lumen	134m	4500cd
			*45min	3h	8h15min	52h	1200h		
	HC60 UHE	UHE LED	1600 Lumens	1000 Lumens	400 Lumens	100 Lumens	8 Lumens	157m	6170cd
			3h30min	5h	14h	36h	200h		
	HC65 UHE / HC65M UHE	UHE LED	Primary White Light					222m	12293cd
			2000 Lumens	1300 Lumens	400 Lumens	100 Lumens	—		
2h			5h	14h	31h	—			
Auxiliary White Light									
—			—	—	40 Lumens	8 Lumens			
—			—	—	40h	82h			
HC70 UHE	UHE LED	1600 Lumens	1000 Lumens	500 Lumens	150 Lumens	8 Lumens	156m	6112cd	
		5h	8h	18h	38h	220h			
HC75 UHE	UHE LEDs	Mixed Light	Spotlight / Floodlight / Mixed Light			Floodlight	192m	9216cd	
		3000 Lumens	1500 Lumens	600 Lumens	200 Lumens	40 Lumens			
		4h30min	7h15min	12h	32h	84h			
HU2000	UHE LED	2000 Lumens	1000 Lumens	400 Lumens	180 Lumens	20 Lumens	160m	6400cd	
		9h	11h	17h	31h30min	66h			
		—	1000 Lumens	400 Lumens	180 Lumens	20 Lumens			
		—	6h	10h	20h	42h			
EDC Series	EDC09	2 x MCT UHE LEDs	Neutral White Light	*1450 Lumens	180 Lumens	40 Lumens	1 Lumen	153m	5899cd
				2h15min	2h45min	13h	250h		
			Cool White Light	*1600 Lumens	200 Lumens	50 Lumens	1 Lumen		
				2h15min	2h45min	13h	250h		
			Warm Light	*1050 Lumens	150 Lumens	32 Lumens	1 Lumen		
				2h15min	2h45min	13h	250h		
	EDC17	UHi 25 LED	White Light	*1500 Lumens	220 Lumens	50 Lumens	1 Lumen	230m	12400cd
				1h45min	3h30min	16h	260h		
—		UV Light	LEVEL 3	LEVEL 2	LEVEL 1	—			
			1350mW	650mW	220mW	—			
			2h	5h	13h	—			

NOTE: Runtime has been measured with the first battery type stated in battery options.
* The runtime for Turbo/High mode is the testing result before starting temperature regulation.

WATERPROOF	BATTERY OPTIONS	DIMENSIONS			WEIGHT	MODEL
		LENGTH	HEAD DIAMETER	TAIL DIAMETER		
IP66	1xHLB1500	63mm x 48mm x 33mm (2.48" x 1.89" x 1.30")			65g (2.29 oz)	HA25 UHE
	3xAAA					
IPX6	1xHLB1500	73mm x 43mm x 38mm (2.87" x 1.69" x 1.50")			75g (2.65 oz)	HA27 UHE
	3xAAA					
IP68	1x18650 / 1xIMR18650 / 2xCR123 / 2xRCR123	105.3mm (4.15")	25.5mm x 24.2mm (1.00" x 0.95")	23.8mm (0.94")	51.2g (1.81oz)	HC33
IP68	1x21700 / 1x18650 / 2xCR123 / 2xRCR123	128.2mm (5.05")	28.85mm x 31.77mm (1.14" x 1.25")	28.3mm (1.11")	100g (3.53 oz)	HC35
IP68	1x18650	80mm x 42mm x 48.5mm (3.15" x 1.65" x 1.91")			140g (4.94 oz)	HC60 UHE
IP68	1x18650	HC65 UHE : 89.5mm x 42.2mm x 46mm (3.52" x 1.66" x 1.81")			HC65 UHE: 152g (5.36 oz)	HC65 UHE / HC65M UHE
		HC65M UHE : 90.1mm x 51.5mm x 45.2mm (3.55" x 2.03" x 1.78")			HC65M UHE: 143g (5.04 oz)	
IP68	1x21700	84mm x 45.2mm x 50.5mm (3.31" x 1.78" x 1.99")			172g (6.07 oz)	HC70 UHE
IP68	1x21700	92.4mm x 46.8mm x 45.5mm (3.64" x 1.84" x 1.79")			209g (7.37 oz)	HC75 UHE
IP68	1xNB10000 Gen3	80mm x 41.9mm x 26.1mm (3.15" x 1.65" x 1.03")			114g (4.02 oz)	HU2000
	1xCarbon Battery™ 6K					
IPX6	Built-in rechargeable Li-ion battery	108mm (4.25")	34mm (1.34") (Width)	17mm (0.67") (Height)	114g (4.02 oz)	EDC09
IPX7	Built-in rechargeable Li-ion battery	123mm (4.84")	32mm (1.26") (Width)	16mm (0.63") (Height)	106g (3.74 oz)	EDC17

MODEL		LED	OUTPUT / RUNTIME					BEAM DISTANCE	PEAK BEAM INTENSITY
			TURBO	HIGH	MID	LOW	ULTRALOW		
EDC Series	EDC23	2 x UHi 25 LEDs	2500 Lumens	1100 Lumens	200 Lumens	65 Lumens	15 Lumens	280m	20720cd
			–	1h30min	3h45min	11h	39h		
	EDC27 UHi	2 x UHi 20 LEDs	3100 Lumens	1100 Lumens	200 Lumens	65 Lumens	15 Lumens	305m	23500cd
			–	1h35min	4h20min	14h	55h		
	EDC29	2 x UHi 20 MAX LEDs	LUMINSHIELD* SEARCH	–	–	–	–	400m	40230cd
			6500 3000 Lumens	1200 Lumens	400 Lumens	100 Lumens	15 Lumens		
			–+	2h	3h	13h	61h		
	EDC31	UHi 20 MAX LED	LUMINSHIELD* SEARCH	–	–	–	–	380m	35630cd
			3500 1500 Lumens	1100 Lumens	300 Lumens	70 Lumens	5 Lumens		
			–+	4h	5h	24h	57h		
	EDC35	UHi 40 MAX LED	LUMINSHIELD* SEARCH	–	–	–	–	550m	75700cd
			5000 3000 Lumens	1300 Lumens	300 Lumens	70 Lumens	5 Lumens		
			–+	4h45min	9h15min	40h	90h		
Tiny Monster Series	TM9K Pro	3 x UHi 40 MAX LEDs	LUMINSHIELD* SEARCH	–	–	–	–	510m	65400cd
			9900 6000 Lumens	2000 Lumens	500 Lumens	130 Lumens	30 Lumens		
			–+	3h	4h	17h	65h		
	TM12K	6 x CREE XHP50	12000 Lumens	1000 Lumens	300 Lumens	100 Lumens	6 Lumens	250m	15600cd
			–	*2h15min	7h30min	20h	200h		
	TM20K	19 x CREE XP-L2 LED	20000 Lumens	3100 Lumens	1900 Lumens	1050 Lumens	320 Lumens	290m	22200cd
			–	*45min	1h45min	4h15min	13h		
	TM39	LUMINUS SBT-90 GEN2	5200 Lumens	2000 Lumens	800 Lumens	200 Lumens	–	1500m	562500cd
			*1h30min	*4h	10h	36h	–		
Precise Series	P10i	Luminus SST-40-W	–	1800 Lumens	280 Lumens	35 Lumens	–	290m	21100cd
			–	2h30min	11h	50h	–		
	P10iX	4 x CREE XP-L2 V6	4000 Lumens	1700 850 Lumens	300 Lumens	50 Lumens	2 Lumens	158m	6250cd
			*30min	2h 2h30min	7h15min	38h	350h		
	P20iX	4 x CREE XP-L2 V6	4000 Lumens	1700 850 Lumens	300 Lumens	50 Lumens	2 Lumens	221m	12200cd
			*30min	2h 2h30min	7h15min	38h	350h		
	P20i UV	Luminus SST-40-W	–	1800 Lumens	250 Lumens	35 Lumens	–	337m	28500cd
			–	1h45min	8h30min	38h	–		
	P20UV V2	CREE XP-L2 V6	–	HIGH (M1/M2/M3)	MID (M3)	MID (M2)	LOW (M3)	164m	6700cd
			–	1000 Lumens	330 Lumens	180 Lumens	60 Lumens		
			–	2h30min	7h	16h	46h		
	P23i	Luminus SFT-70	3000 Lumens	1500 Lumens	800 Lumens	250 Lumens	50 Lumens	470m	55300cd
			*30min	2h30min	4h	10h	45h		

NOTE: Runtime has been measured with the first battery type stated in battery options.
* The runtime for Turbo/High mode is the testing result before starting temperature regulation.

WATERPROOF	BATTERY OPTIONS	DIMENSIONS			WEIGHT	MODEL
		LENGTH	HEAD DIAMETER	TAIL DIAMETER		
IP54	Built-in rechargeable Li-ion battery	102.8mm(4.05")	33mm(1.30") (Width)	22.5mm(0.89") (Height)	101g(3.56 oz)	EDC23
IP54	Built-in rechargeable Li-ion battery	135.3mm(5.33")	31.4mm(1.24") (Width)	22.2mm(0.87") (Height)	122g(4.30 oz)	EDC27 UHi
IP54	Built-in rechargeable Li-ion battery	133.5mm(5.26")	34.6mm(1.36") (Width)	22.5mm(0.89") (Height)	160g(5.64 oz)	EDC29
IP68	Built-in rechargeable Li-ion battery	113.2mm(4.46")	23mm(0.91")	22.6mm(0.89")	100g(3.53 oz)	EDC31
IP68	Built-in rechargeable Li-ion battery	124.3mm(4.89")	31.8mm(1.25")	26mm(1.02")	178g(6.28 oz)	EDC35
IP54	Built-in rechargeable Li-ion battery	108mm(4.25")	39.3mm(1.55") (Width)	31mm(1.22") (Height)	199g(7.02 oz)	EDC37
IP68	Built-in rechargeable Li-ion battery	133mm(5.24")	40mm(1.57")	28mm(1.10")	227g(8.01 oz)	TM9K Pro
IP68	Built-in rechargeable Li-ion battery	108mm x 41mm x 31mm (4.25" x 1.61" x 1.22")			233g(8.22oz)	TM12K
IP68	Built-in rechargeable Li-ion battery	145.5mm(5.73")	50mm(1.97")	50mm×26mm (1.97×1.02")	422g(14.89oz)	TM20K
IP68	1xNBP68H0	276mm(10.87")	90mm(3.54")	50mm(1.97")	1361g(48.01oz)	TM39
IP68	1x21700i / 2xCR123 / 2xRCR123	147mm(5.79")	25.4mm(1.00")	28.5mm(1.12")	84g(2.96oz)	P10i
IP68	1x21700i / 2xCR123 / 2xRCR123	137.2mm(5.40")	25.4mm(1.00")	28.5mm(1.12")	79.5g(2.80oz)	P10iX
IP68	1x21700i / 2xCR123 / 2xRCR123	141.5mm(5.57")	31.8mm(1.25")	28.5mm(1.12")	116g(4.09oz)	P20iX
IP68	1x21700i / 2xCR123 / 2xRCR123	150.5mm(5.93")	31.8mm(1.25")	28.5mm(1.12")	124g(4.37oz)	P20i UV
IP68	1x18650 / 2xCR123 / 2xRCR123	151.2mm(5.95")	31.8mm(1.25")	26mm(1.02")	133.5g(4.71oz)	P20UV V2
IP68	1x21700i	143.5mm(5.65")	31.8mm(1.25")	28.5mm(1.12")	114.5g(4.04oz)	P23i

Model		LED	Output / Runtime					Beam Distance	Peak Beam Intensity	
			Turbo	High	Mid	Low	UltraLow			
Precise Series	P30i	CREE XHP35 HI	2000 Lumens	1000 Lumens	385 Lumens	85 Lumens	6 Lumens	1000m	250000cd	
			*30min	1h30min	4h	18h	100h			
	NEW P30	CREE XP-L HI V3	1000 Lumens	400 Lumens	220 Lumens	70 Lumens	1 Lumen	618m	95500cd	
			*1h15min	4h	7h	23h	950h			
	P40	5 floodlight LEDs	TURBO	Mixed Light				-	*2900m	*2130800cd
			* 2000 Lumens	600 Lumens	300 Lumens	80 Lumens				
			*1h	2h30min	4h	20h				
			-	100% Spotlight						
				400 Lumens	200 Lumens	50 Lumens				
				2h30min	3h45min	20h				
				100% Floodlight						
				800 Lumens	400 Lumens	100 Lumens				
	2h30min	4h		20h						
Smart Ring Tactical Series	SRT6i	High Performance LEDs	2100 Lumens	-	300 Lumens	30 Lumens	-	510m	65200cd	
			*30min	-	7h30min	70h	-			
Multitask Hybrid Series	MH10 V2	CREE XP-L2 V6	-	1200 Lumens	300 Lumens	55 Lumens	1 Lumen	202m	10200cd	
			-	3h45min	8h	46h	1500h			
	MH11	CREE XP-L2 V6	1000 Lumens	230 Lumens	50 Lumens	3 Lumens	-	190m	9150cd	
			2h15min	4h15min	20h45min	250h	-			
	MH12 Pro	UHI 40 LED	3300 Lumens	1200 Lumens	300 Lumens	50 Lumens	1 Lumen	505m	63500cd	
			*30min	4h30min	8h30min	50h	650h			
	MH25 Pro	UHI 40 LED	3300 Lumens	1200 Lumens	300 Lumens	50 Lumens	1 Lumen	705m	124300cd	
			*30min	2h30min	7h30min	50h	650h			
	MH40 Pro	UHI 40 MAX LED	3500 Lumens	1300 Lumens	400 Lumens	80 Lumens	-	1300m	423000cd	
			*45min	4h15min	13h	62h	-			
			2000 Lumens	1200 Lumens	400 Lumens	80 Lumens	-			
			*1h	4h15min	15h	65h	-			
Multi- Task Series	MT1A Pro	UHI 25 LED	1xNL1411R	*800 Lumens	300 Lumens	50 Lumens	-	250m	15700cd	
				1h	1h45min	10h	-			
			1xAA	-	200 Lumens	50 Lumens	-			
				-	1h30min	5h	-			
MT1C Pro	UHI 20 LED	1xNL1816R	1000 Lumens	-	50 Lumens	-	360m	32500cd		
			1h15min	-	16h	-				
		1xRCR123	800 Lumens	-	50 Lumens	-				
			45min	-	12h	-				
		1xCR123	500 Lumens	-	50 Lumens	-				
			1h	-	9h15min	-				
MT2A Pro	UHI 20 LED	1xNL1416R	1000 Lumens	300 Lumens	50 Lumens	-	255m	16500cd		
			1h30min	2h45min	20h	-				
		2xAA	-	500 Lumens	60 Lumens	-				
			-	2h	11h	-				

NOTE: Runtime has been measured with the first battery type stated in battery options.
* The runtime for Turbo/High mode is the testing result before starting temperature regulation.

WATERPROOF	BATTERY OPTIONS	DIMENSIONS			WEIGHT	MODEL
		LENGTH	HEAD DIAMETER	TAIL DIAMETER		
IP68	1x21700i / 2xCR123 / 2xRCR123	177.5mm(6.99")	65mm(2.56")	28.5mm(1.12")	255.5g(9.01oz)	P30i
IP68	1x21700 / 1x18650 / 2xCR123 / 2xRCR123	155.5mm(6.12")	50mm(1.97")	27.2mm(1.07")	158.5g(5.59oz)	NEW P30
IP68	1x21700	186mm(7.32")	67mm(2.64")	37mm(1.46")	390g(13.76 oz)	P40
IP68	1x21700i / 2xCR123 / 2xRCR123	163mm(6.42")	40mm(1.57")	31mm(1.22")	167g(5.89 oz)	SRT6i
IP68	1x21700 / 1x18650 / 2xCR123 / 2xRCR123	147mm(5.79")	25.4mm(1.00")	27.2mm(1.07")	77.5g(2.73oz)	MH10 V2
IP68	1x18650 / 2xCR123 / 2xRCR123	128.3mm(5.05")	24mm(0.94")	24mm(0.94")	60.5g(2.13oz)	MH11
IP68	1x21700	138.5mm(5.45")	26.8mm(1.06")	27mm(1.06")	82g(2.89oz)	MH12 Pro
IP68	1x21700	153.6mm(6.05")	40mm(1.57")	27mm(1.06")	130g(4.59oz)	MH25 Pro
IP68	1xNBP100R 2x21700	256mm(10.08")	65mm(2.56")	27mm(1.06")	417g(14.71oz)	MH40 Pro
IP68	1x14500/ 1xAA	93mm(3.66")	19.7mm(0.78")	19.5mm(0.77")	32g(1.13 oz)	MT1A Pro
IP68	1x18350 / 1xRCR123 / 1xCR123	88mm(3.46")	26.8mm(1.06")	24.4mm(0.96")	53g(1.87 oz)	MT1C Pro
IP68	1x14500 / 2xAA	142.8mm(5.62")	19.7mm(0.78")	19.5mm(0.77")	40g(1.41oz)	MT2A Pro

	MODEL	LED	OUTPUT / RUNTIME					BEAM DISTANCE	PEAK BEAM INTENSITY
			TURBO	HIGH	MID	LOW	ULTRALOW		
Multi-Task Series	MT2C Pro	UHI 20 LED	1xNL1836R	1800 Lumens	–	50 Lumens	–	520m	67000cd
				2h15min	–	28h	–		
			2xRCR123	800 Lumens	–	50 Lumens	–		
				1h30min	–	12h	–		
			2xCR123	800 Lumens	–	50 Lumens	–		
				2h45min	–	20h	–		
	MT06MD	Nichia 219B	–	180 Lumens	45 Lumens	4 Lumens	–	58m	860cd
			–	45min	5h15min	35h	–		
	MT10C	CREE XM-L2 U2	920 Lumens	500 Lumens	180 Lumens	70 Lumens	1 Lumen	190m	9000cd
			30min	45min	1h45min	5h	120h		
NPL Series	MT21C	CREE XP-L HD V6	1000 Lumens	400 Lumens	190 Lumens	50 Lumens	1 Lumen	184m	8500cd
			*1h	3h45min	7h30min	25h	700h		
	NPL25	UHI 20 LED	–	900 Lumens	–	200 Lumens	–	225m	16000cd
			–	35min	–	1h15min	–		
	NPL25 GL	UHI 25 LED	HIGH	LOW	HIGH + GREEN LASER	LOW + GREEN LASER	GREEN LASER	216m	11900cd
			900 Lumens	120 Lumens	900 Lumens + Green Laser< 5mW	120 Lumens + Green Laser< 5mW	<5mW		
			43min	1h30min	43min	1h30min	10h		
	NPL27	–	–	650 Lumens	–	160 Lumens	–	410m	42000cd
			–	50min	–	1h 15min	–		
	NPL35	–	–	2000 Lumens	–	320 Lumens	–	412m	42500cd
			–	1h45min	–	3h15min	–		
T Series	Thumb	2 x High Performance LEDs	–	85 Lumens	30 Lumens	2 Lumens	–	26m	170cd
			–	45min	2h15min	22h	–		
	Thumb LED	2 x High Performance LEDs	45 Lumens	–	–	–	–	24m	150cd
			2h	–	–	–	–		
	T4K	4 x CREE XP-L2 V6	4000 Lumens	200 Lumens	65 Lumens	15 Lumens	1 Lumen	209m	10900cd
			–	2h45min	7h	21h	67h		
	TUBE V2.0	High Performance LED	–	55 Lumens	–	1 Lumen	–	25m	156cd
			–	1h15min	–	58h	–		
	TIKI/TIKI LE/ TIKI GITD/ TIKI GITD	OSRAM P8	–	300 Lumens	60 Lumens	15 Lumens	1 Lumen	71m	1260cd
			–	30min	1h	4h	40h		
	TIKI UV	Luminus SST-10-UV	UV		AUX WHITE		–	–	–
			1000mW	180mW	70 Lumens	35 Lumens			
			1h	2h	30min	1h			
	TIP3	MCT UHE LEDs	720 Lumens	220 Lumens	65 Lumens	15 Lumens	1 Lumen	92m	2117cd
			–	1h45min	6h	16h	160h		
	TUP2	4 x MCT UHE LEDs	*1200 Lumens	300 Lumens	80 Lumens	15 Lumens	1 Lumen	125m	3900cd
			–	2h	7h15min	30h	190h		
	TINI3	MCT UHE LEDs	*600 Lumens	200 Lumens	65 Lumens	15 Lumens	1 Lumen	90m	2050cd
			–	1h	2h45min	9h	85h		
Chameleon Series	CI7	4 x CREE XP-G3 S3	2500 Lumens	1100 Lumens	320 Lumens	90 Lumens	8 Lumens	279m	19500cd
			*30min	1h45min	4h15min	20h	130h		
		4 x Luminus SST-10-IR	–	7000mW	3000mW	1000mW	–		
			–	2h	3h15min	9h	–		

NOTE: Runtime has been measured with the first battery type stated in battery options.
 * The runtime for Turbo/High mode is the testing result before starting temperature regulation.

WATERPROOF	BATTERY OPTIONS	DIMENSIONS			WEIGHT	MODEL
		LENGTH	HEAD DIAMETER	TAIL DIAMETER		
IP68	1x18650/ 2xRCR123 /2XCR123	117.5mm(4.63")	26.8mm(1.06")	24.4mm(0.96")	64g (2.26 oz)	MT2C Pro
IPX8	2xAAA	128mm(5.04")	14mm(0.55")	14mm(0.55")	22g (0.78oz)	MT06MD
IPX8	1xIMR18350 / 1xCR123/ 1xRCR123	91.2mm(3.59")	25.4mm(1.00")	25.4mm(1.00")	57g (2.01oz)	MT10C
IPX8	1x18650 / 2xCR123 / 2xRCR123	131mm(5.15")	25.4mm(1.00")	25.4mm(1.00")	103.5g (2.55oz)	MT21C
IPX6	1xLi-ion Battery	56mm x 33mm x 32mm(2.20" x 1.30" x 1.26")			66g (2.33oz)	NPL25
IPX6	1xLi-ion Battery	62mm x 33mm x 32mm(2.44" x 1.30" x 1.26")			74g (2.61oz)	NPL25 GL
IPX6	1xLi-ion Battery	66.5mm x 33mm x 32mm(2.62" x 1.30" x 1.26")			73g (2.57 oz)	NPL27
IPX6	1xLi-ion Battery	88.1mm x 37.1mm x 36mm(3.47" x 1.46" x 1.42")			129g (4.55 oz)	NPL35
IP65	Built-in rechargeable Li-ion battery	74mm(2.91") (Length)	24mm(0.94") (Width)	15.8mm(0.62") (Depth)	25g (0.88oz)	Thumb
IP65	Built-in rechargeable Li-ion battery	74mm(2.91") (Length)	24mm(0.94") (Width)	15.8mm(0.62") (Depth)	25g (0.88oz)	Thumb LED
IP54	Built-in rechargeable Li-ion battery	82.3mm x 30mm x 29.2mm(3.24" x 1.18" x 1.15")			77g (2.72oz)	T4K
IP65	Built-in rechargeable Li-ion battery	56.5mm(2.22") (Length)	21mm(0.83") (Width)	8mm(0.31") (Depth)	9.6g (0.34oz)	TUBE V2.0
IP66	Built-in rechargeable Li-ion battery	55mm(2.17")	14.7mm(0.58")	–	TIKI/TIKI GITD/TIKI GITD BLUE: 12g(0.42oz) TIKI LE: 10.5g(0.37oz)	TIKI/TIKI LE/ TIKI GITD/ TIKI GITD
IP66	Built-in rechargeable Li-ion battery	55mm(2.17")	14.7mm(0.58")	–	10.5g (0.37oz)	TIKI UV
IP54	Built-in rechargeable Li-ion battery	62mm x 26mm x 15mm(2.44" x 1.02" x 0.59")			30g (1.06oz)	TIP3
IP54	Built-in rechargeable Li-ion battery	70mm x 27mm x 30mm(2.76" x 1.06" x 1.18")			58g (2.05 oz)	TUP2
IP54	Built-in rechargeable Li-ion battery	47.2mm x 25.4mm x 14mm(1.86" x 1.00" x 0.55")			20g (0.71 oz)	TINI3
IP68	1x18650 / 2xCR123 / 2xRCR123	148.2mm(5.83")	40mm(1.57")	26mm(1.02")	158g (5.57oz)	CI7

Chameleon Series

Model		LED	Output / Runtime					Beam Distance	Peak Beam Intensity
			Turbo	High	Mid	Low	UltraLow		
Explorer Series	EX7	4 x M515S LEDs	Mixed Light/Spotlight/Floodlight				ULTRALOW	500m	63470cd
			1500 Lumens	600 Lumens	180 Lumens	30 Lumens	1 Lumen		
			2h30min	5h30min	15h	80h	570h		
			Mixed Light	Spotlight	—	—	—		
			LUMIN SHIELD®	SEARCH	—	—	—		
			*6000 Lumens	*3000 Lumens	—	—	—		
			*2h	*2h15min	—	—	—		
DL Series	DL30	—	1100 Lumens	800 Lumens	650 Lumens	350 Lumens	—	788m	155420cd
			2h	3h	4h	6h	—		
CL Series	CL10	—	WHITE HIGH	WHITE LOW	RED CONSTANT-ON	BLUE CONSTANT- ON	RED/BLUE WARNING FLASHING	15m	59cd
			45 Lumens	20 Lumens	5 Lumens	3 Lumens	5 Lumens		
			15h	28h	17h	18h	17h		
Lantern Series	LR40	—	Warm Light		White Light		Warm White Light		—
			(Max) 80 Lumens	(Min) 15 Lumens	(Max) 50 Lumens	(Min) 15 Lumens	(Max) 100 Lumens	(Min) 10 Lumens	
			15h	45h	10h	38h	8h	65h	
	LR70	2 x Luminus SST40	Flashlight Mode					300m	23100cd
			3000 Lumens	1000 Lumens	300 Lumens	35 Lumens	1 Lumen		
			—	10h	21h	100h	600h		
		20 x high CRI LEDs	Lantern Mode						
—			400 Lumens	55 Lumens	5 Lumens	—			
NWL Series	NWL20	—	Spotlight					93m	1269cd
			—	290 Lumens	—	125 Lumens	—		
			—	10h	—	15h	—		
			Floodlight						
			—	600 Lumens	260 Lumens	30 Lumens	—		
			—	6h	10h	78h	—		
	NWL30	—	White Light		—	—	—	120m	3577cd
			HIGHEST	LOWEST	—	—	—		
			3000 Lumens	50 Lumens	—	—	—		
			7h30min	130h	—	—	—		
GEM Series	GEM8	CREE XP-L HI V3	500 Lumens	—	—	—	1 Lumen	39m	380cd
			*1h	—	—	—	500h		
	GEM10UV	Ultraviolet 3000mW, 365nm	Ultraviolet (Turbo)	—	—	—	Ultraviolet (Ultralow)	—	—
			3000mW	—	—	—	5mW		
			*4h15min	—	—	—	500h		

WATERPROOF	BATTERY OPTIONS	DIMENSIONS			WEIGHT	MODEL	
		LENGTH	HEAD DIAMETER	TAIL DIAMETER			
IP68	1x21700	130mm (5.12")	35mm (1.38")	28mm (1.10")	140g (4.94 oz)	EX7	Explorer Series
IP68	1x21700	164.6mm (6.48")	47.7mm (1.88")	28.8mm (1.13")	273g (9.63 oz)(in Air) 126g (4.44 oz) (Underwater)	DL30	DL Series
IPX4	2xAAA	56.5mm x 22.4mm x 45.0mm (2.22" x 0.88" x 1.77")			28g (0.99 oz)	CL10	CL Series
—	Built-in rechargeable Li-ion battery	117mm x 96mm x 96mm (4.61" x 3.78" x 3.78")			222g (7.83oz)	LR40	Lantern Series
IP67	Built-in rechargeable Li-ion battery	113mm x 60mm x 34mm (4.45" x 2.36" x 1.34")			271g (9.56 oz)	LR70	
IPX5	1x21700	216.7mm x 50mm x 41.2mm (8.53" x 1.97" x 1.62")			153g (5.40oz)	NWL20	NWL Series
IP66	Built-in rechargeable Li-ion battery	106.4mm x 121.8mm x 52.7mm (4.19" x 4.80" x 2.07")			515g (18.17oz)	NWL30	
IPX8	1x18650 / 2xCR123 / 2xRCR123	139mm (5.47")	9mm (0.35")	21.5mm (0.85")	57.7g (2.04oz)	GEM8	GEM Series
IPX8	1x18650 / 2xCR123 / 2xRCR123	135mm (5.31")	16mm (0.63")	21.5mm (0.85")	66.5g (2.35oz)	GEM10UV	

NOTE: Runtime has been measured with the first battery type stated in battery options.
* The runtime for Turbo/High mode is the testing result before starting temperature regulation.

All images, text and statements specified herein this catalogue are for reference purpose only. Should any discrepancy occur between this catalogue and information specified on www.nitecore.com, information on our official website shall prevail. Sysmax Innovations Co., Ltd. reserves the rights to interpret and amend the content of this document at any time without prior notice.

PHOTO CREDITS

stanislavpetera & hard_task_photo	Weerapat Kiatdumrong	郑凯	its_sa_nam
Lee McGrath	fotografianocturna.net	__call.me.v__	菜园
trailrunningnews	lock	汗斯	victorlaforteza
Victor Rodriguez	Eftihis Samolis	ookorkut	angel.ehb
Philipp Stutschies	gudao-wang	roldangilbuena	David Pacheco
Vrg fotografia	Jakub Kasprzak	数懒小姐姐	